

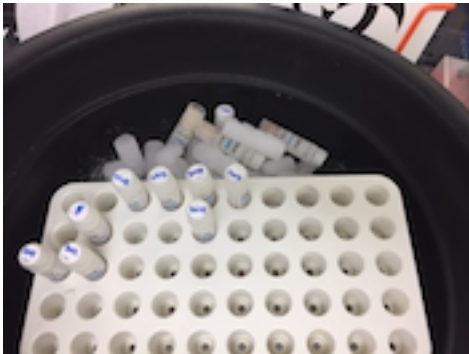
Cell Thawing Procedure Using Cryothaw Adapters

Cryothaw adapters for thawing frozen cells:

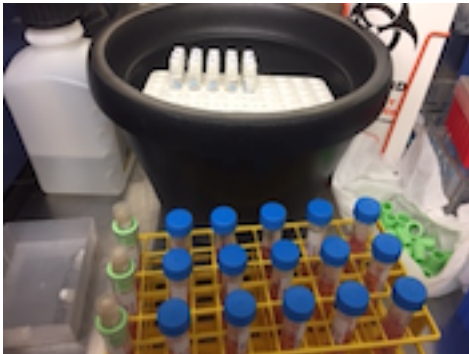
<https://medax.square.site/shop/cryothaw/2>

Thawing protocol:

1. Remove selected tubes out of the freezer and place on dry ice.



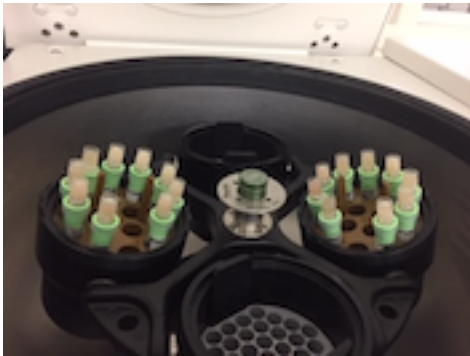
2. Add 10ml of warm media to the 15 ml conical centrifuge tubes.
3. Wipe frozen vials with 70% ethanol. Remove caps off of the centrifuge tubes and replace with them with the green cryothaw adaptors.



4. Invert frozen vial and place on top of the 15 ml centrifuge tube.



5. Centrifuge at 696g for 5 min at room temp.



6. After centrifugation, frozen cells have thawed and fallen into warm media.



7. Decant supernatant and resuspend cells in fresh media.
8. Count cells.
9. Wash cells in D-PBS.
10. Resuspend cells at 1×10^7 cells in D-PBS.