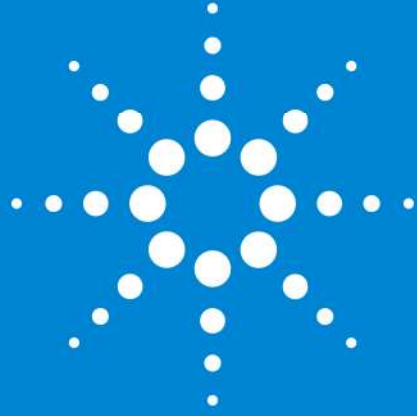




# Agilent CrossLab Group (ACG)

## iLab Operations Software

---



Insight to Outcome

roducing us

**Surdeep Singh.** Agilent SSD Sales Director, SAPK.

**Erward Gibbs.** Agilent iLab BD lead, SAPK.

**Christina Clark.** Agilent iLab Sales AM, Australia.



Agilent Technologies

# ht to Outcome

promises its customers Insight to Outcome and has a mission to deliver valuable laboratory insights that drive superior scientific, operational and economic outcomes.

joined Agilent CrossLab Group (ACG) in August 2016.



Agilent Technologies

# Agilent CrossLab and OpenLab products

## [Lab Operations Software](#)

[Laboratory Business Intelligence \(LBI\)](#) is an analytics service providing deep insight into the usage and status of equipment within an organization across multiple sites.

[Remote Advisor \(RA\)](#) delivers remote instrument service support and integrates with the LBI visualization tools.

[Inventory Management Services](#) with passive RFID asset tracking tools with functionality to tag and locate instrumentation assets.

[Enterprise Content Management \(ECM\)](#) system manages all the data, from any technology or vendor, your lab produces as well documents your lab may use to support its activities. It silently monitors your operation and secures data in a central location while ensuring timely completion of approvals, custom tasks and lab wide reports.

[Electronic Lab Notebook \(ELN\)](#) is the central hub for organizing & sharing information between lab members, to collate ideas, protocols, results (data files), delegate & track the progress of experiments and more.



## offers in RFP response

an advanced web-based Platform Booking System (PBS) for Monash University and ARIN participants

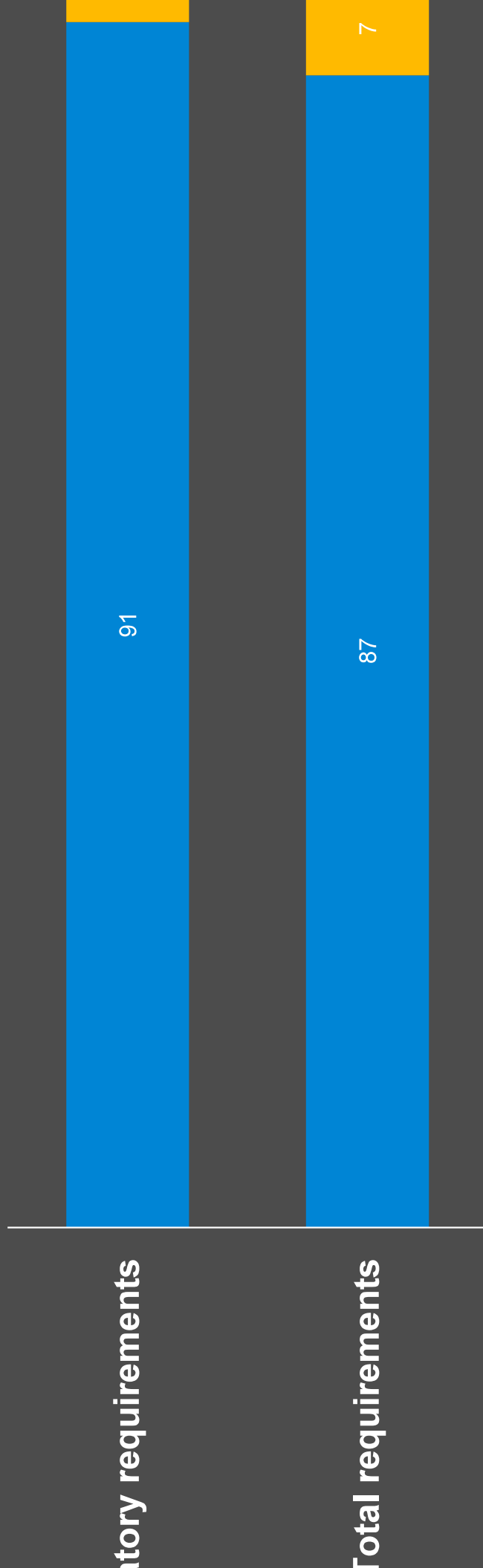
web-based portal allowing public discovery of resources (instruments and services) across multiple research organizations participating in ARIN, and

develop a strategic partnership with a vendor



# Functionality response with current software

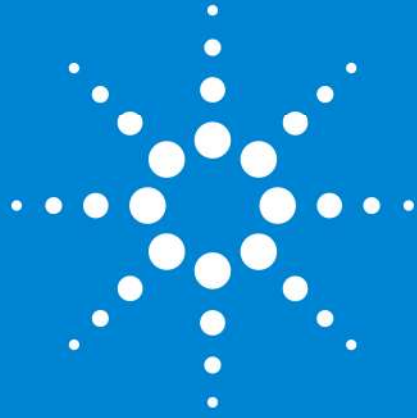
■ Comply   ■ Alternative/Partial   ■ Does not comply



*Agilent iLab Product Management Group will develop Scope of Works and prioritise any mandatory requirements that should be included as part of the solution. Key initiatives.*



# iLab Implementation and Support



## supported implementation and unlimited ongoing support

ent assigns a Project Manager to coordinate all integrations, to work together  
ne Monash assigned Project Manager.

ent assigns an Implementation Associate (IA) to work with every Platform

the IA will do all the work to build your Platform within the application.

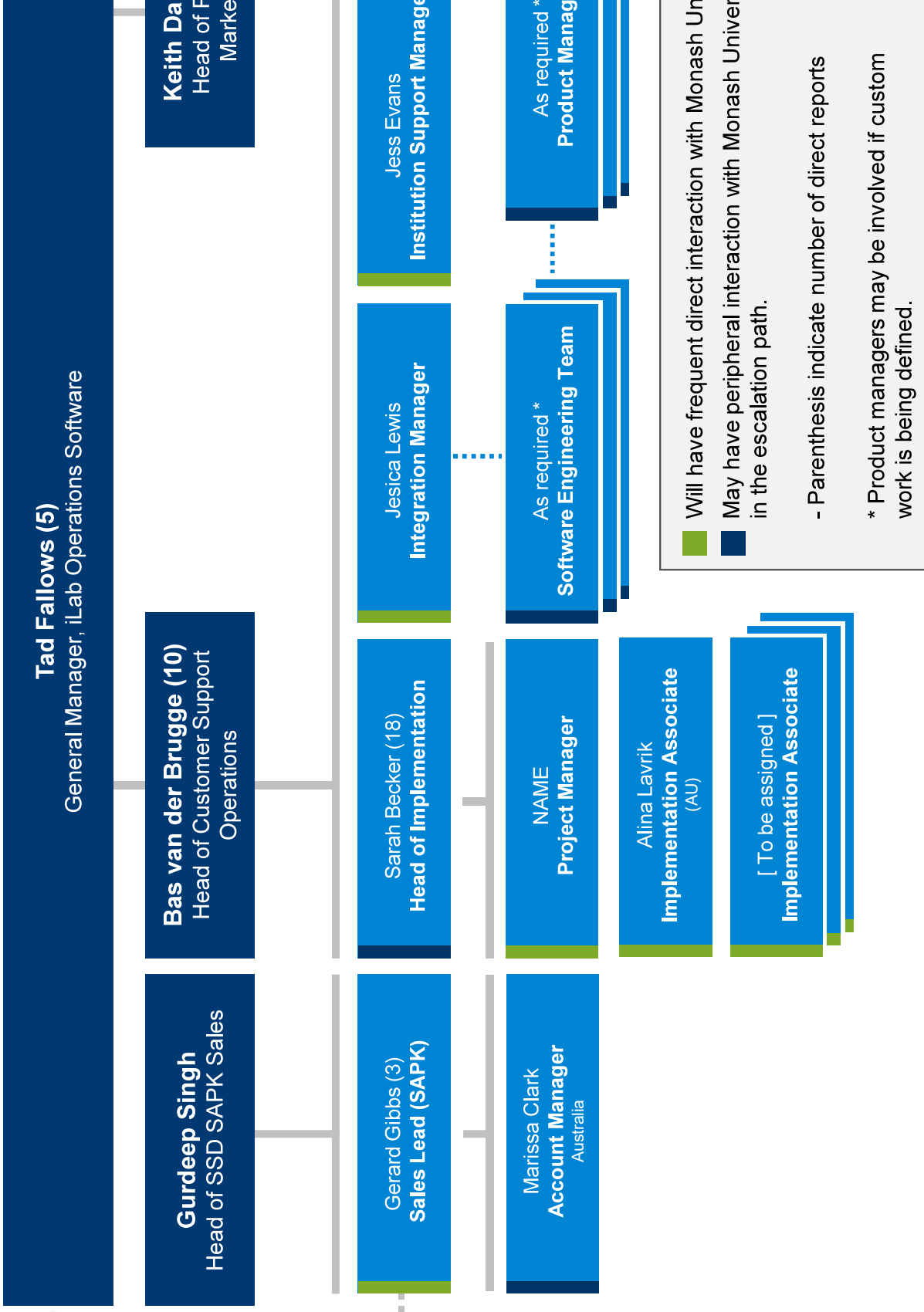
imimises the workload so you can do your normal job supporting your customers.  
provides training

go-live, there is unlimited support through the built in ticket system  
upport people are located in USA, AUS, EUR, giving 24 hr coverage.





# Structure





# iLab Operations Software

---

**Features and Demonstration  
Training for Monash and ARIN for RFP Eval.**

**June 2017**

# GENERAL ILAB INFO AND SITE SETUP FOR THIS RFP EVALUATION

## **login options:**

[Wash University landing page](#)

[General iLab login](#)

[Core Instrument Kiosk](#)

[Medel Trust Instrument Kiosk](#)



Agilent Technologies

# Base suite + modules for comprehensive support of a wide variety of Platforms

## During RFP Evaluation

### Publication tracker module is enabled in 2 Platforms

Some standard functions are not enabled (usage capping, volume discounts). You can see and enable many of these from the "Admin/Settings" Section of the cores you have access to.

Through the course of the evaluation you want to explore these, post a question and I will set it up and describe how it works.

### Financial module is enabled

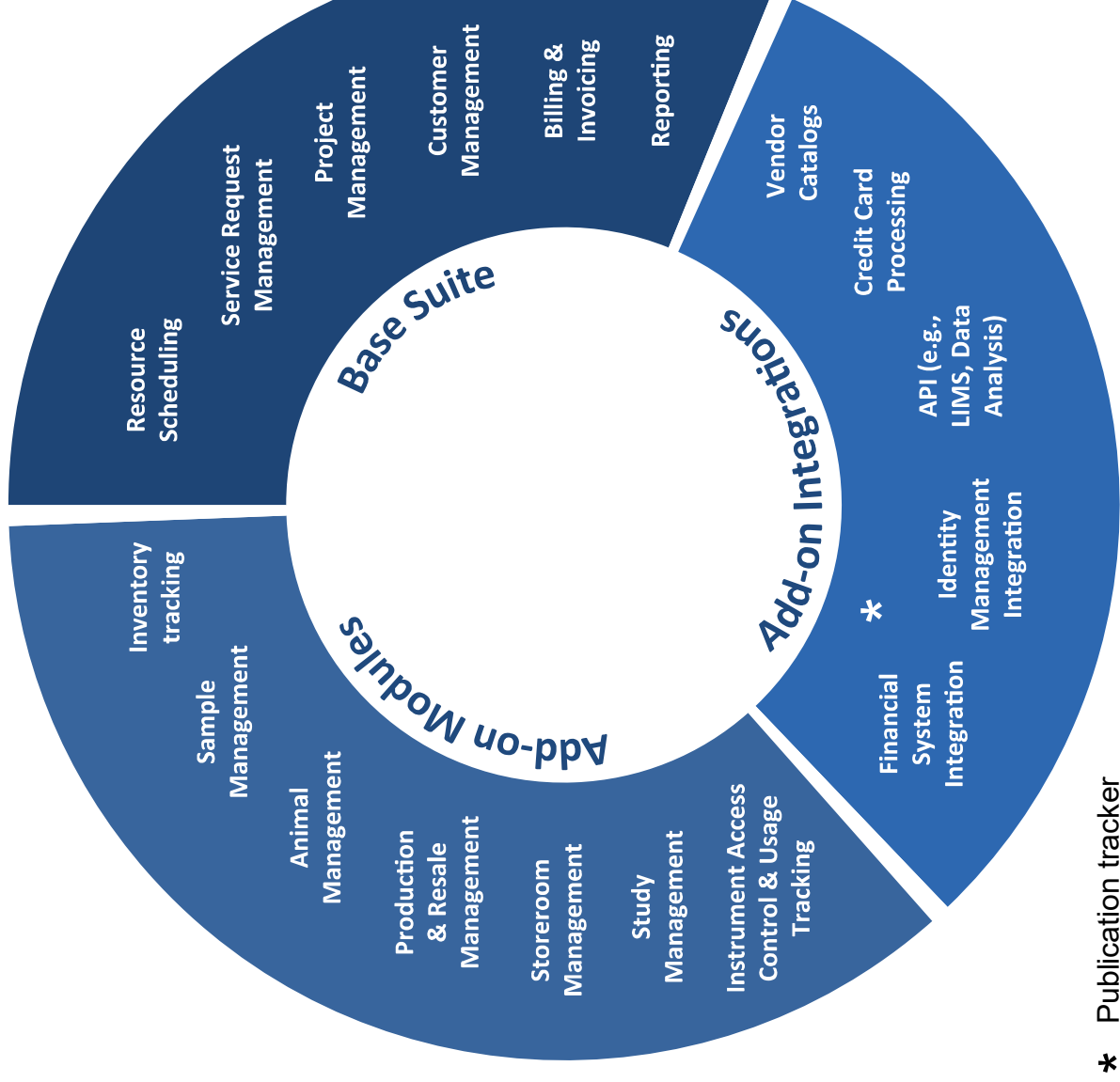
Create / Assign / remove funding sources.

### Usage control module is enabled

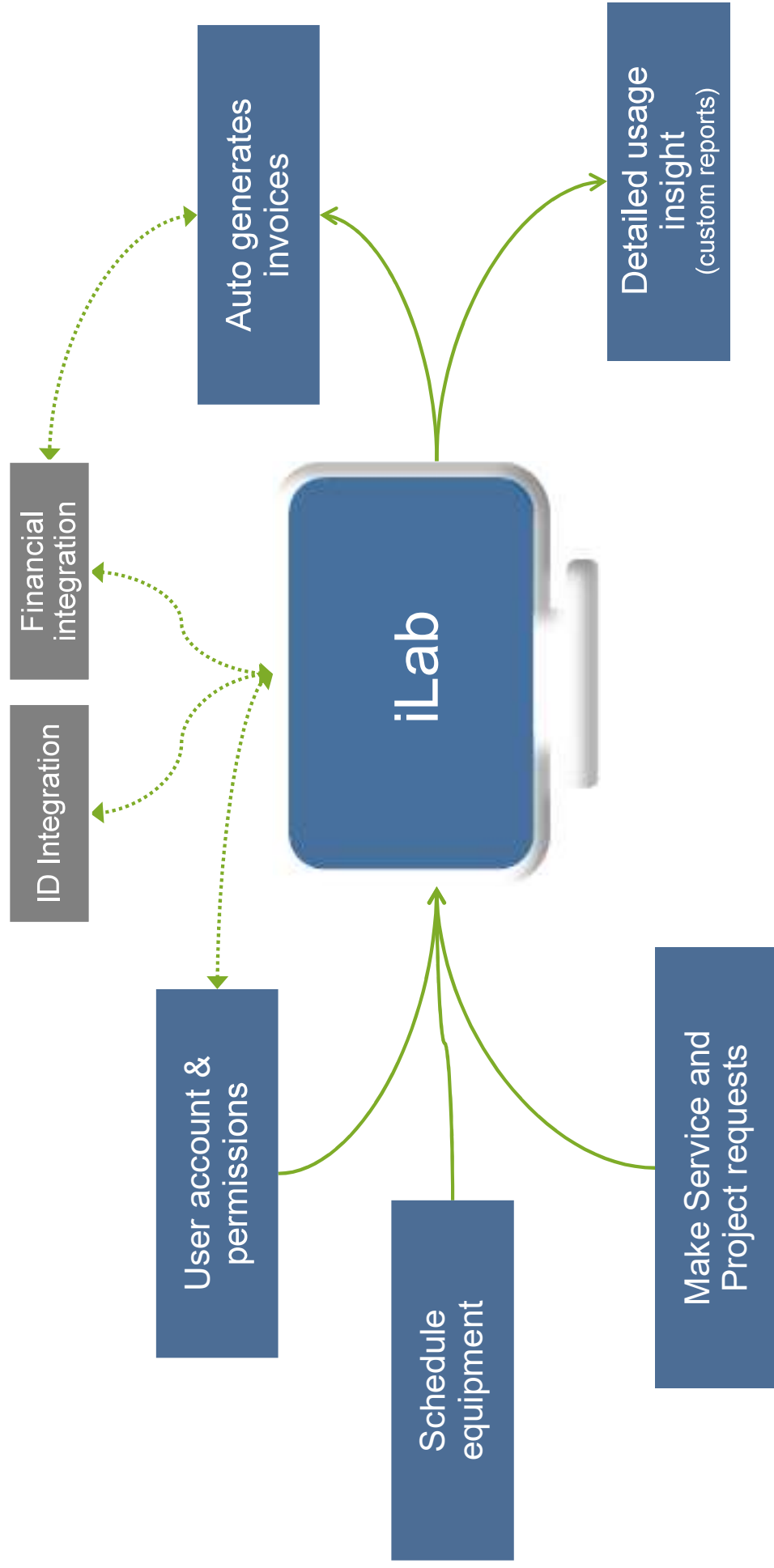
Users can Start and Stop their sessions for actual usage

### Publication tracker module is enabled in other modules??

WE CAN TURN THEM ON, IF YOU WANT... OR GIVE ACCESS TO ANOTHER SITE THAT IS CONFIGURED TO USE THEM



# General workflow in iLab Operations Software



## Our organizational structure is created in iLab

User roles in iLab Solutions system align with typical job function

Every person in this test has multiple permissions.

Core Facility Administrator

- highest level of Access in a core / platform

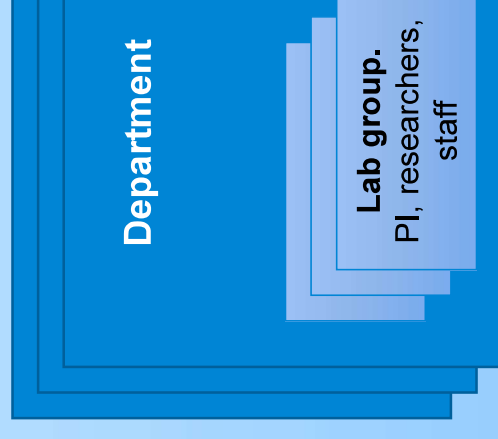
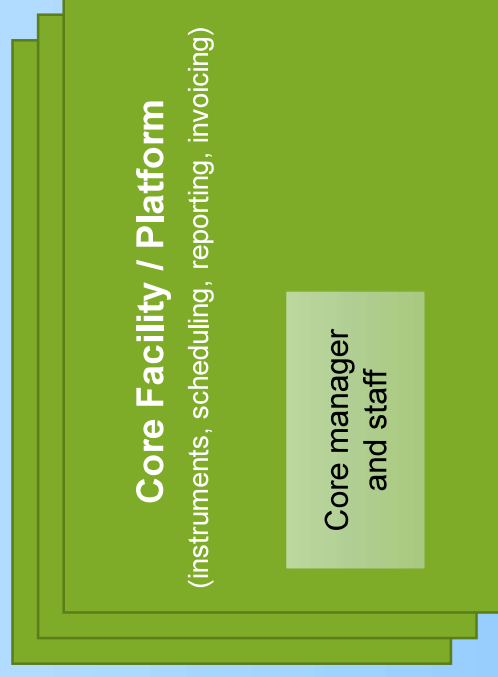
Lab PI or Manager

- ability to assign new lab members, create fund numbers, assign to individuals

**Institutional Manager**

- Change many settings that control specific features
- *Mahyar is Monash Inst. Admin*

## Monash University



**Optional:** Can create “Organisations” within an Institution, such as; Faculty of Science, Faculty of Medicine, Faculty of Health Sciences, etc. Cores can then be placed “inside” the Organisation which allow some separate control (e.g., branding, administration, approvals process) for those Organisations. **They will still use the same ID integration and finance integration.**



# Platforms (cores) are created in this RFP testing scenario

## Core

### Combination of Flowcore instruments and Services + Histology Services

Focus is on instrument usage and Services, with a mix of the two built in here.

Must request access to use the facility  
Some instruments can be accessed if training is provided.  
! Actual usage is required on many instruments

## Gandel Charitable Trust Sequencing Core

### Genomics facility with some instruments and services/projects

- Focus is on services
- Must request access to use the facility
- Some instruments can be accessed if training is provided.
- ! Actual usage is required on the Qiagen Liquid Handling instrument.
- Interlock is configured on this Instrument (for demonstration)



# Specific user accounts for testing (you may need to reset your password)

Affiliation in iLab for testing purposes	Email (used for login)	Lab member	Facility role
Monash	<a href="mailto:Adam.costin@monash.edu">Adam.costin@monash.edu</a>	Monash (TEST) Lab: Manager	Flowcore: Admi
Monash	<a href="mailto:Alex.Fulcher@monash.edu">Alex.Fulcher@monash.edu</a>	Monash (TEST) Lab: Manager	Flowcore: Admi
Monash	<a href="mailto:alexis.gonzalez@unimelb.edu.au">alexis.gonzalez@unimelb.edu.au</a>	ARIN (Test Lab): Manager	Flowcore: Admi
Monash	<a href="mailto:Anitha.Kannan@monash.edu">Anitha.Kannan@monash.edu</a>	Monash (TEST) Lab: Manager	Flowcore: Admi
Monash	<a href="mailto:anna-lena.hempfling1@monash.edu">anna-lena.hempfling1@monash.edu</a>	Monash (TEST) Lab: Manager	Gandel Trust: A
Monash	<a href="mailto:camilla.cohen@monash.edu">camilla.cohen@monash.edu</a>	Monash (TEST) Lab: Manager	Flowcore: Admi
Monash	<a href="mailto:David.steer@monash.edu">David.steer@monash.edu</a>	Monash (TEST) Lab: Manager	Gandel Trust: A
Monash	<a href="mailto:Dru.Morrish@rmit.edu.au">Dru.Morrish@rmit.edu.au</a>	ARIN (Test Lab): Manager, Financial contact	Flowcore: Admi
Monash	<a href="mailto:flame.burgmann@monash.edu">flame.burgmann@monash.edu</a>	Monash (TEST) Lab: Manager	Flowcore: Admi
Monash	<a href="mailto:gabrielle.callander@unimelb.edu.au">gabrielle.callander@unimelb.edu.au</a>	ARIN (Test Lab): Manager	Gandel Trust: A
Monash	<a href="mailto:james.griffith@unimelb.edu.au">james.griffith@unimelb.edu.au</a>	ARIN (Test Lab): Manager	Gandel Trust: A
Monash	<a href="mailto:janelle.gilling@monash.edu">janelle.gilling@monash.edu</a>	Monash (TEST) Lab: Manager	Flowcore: Admi
Monash	<a href="mailto:Jeff.mann@monash.edu">Jeff.mann@monash.edu</a>	Monash (TEST) Lab: Manager	Flowcore: Admi
Monash	<a href="mailto:jisheng.ma@monash.edu">jisheng.ma@monash.edu</a>	Monash (TEST) Lab: Manager	Flowcore: Admi
Monash	<a href="mailto:julie.rothacker@monash.edu">julie.rothacker@monash.edu</a>	Monash (TEST) Lab: Manager, Financial contact	Gandel Trust: A
Monash	<a href="mailto:mahyar.nasabi@monash.edu">mahyar.nasabi@monash.edu</a>	Monash (TEST) Lab: PI, Financial Contact. Monash Institutional Admin.	Flowcore: Admi
Monash	<a href="mailto:matt.burton@mcri.edu.au">matt.burton@mcri.edu.au</a>	ARIN (Test Lab): Manager	Flowcore: Admi
Monash	<a href="mailto:Michael.Reitsma@monash.edu">Michael.Reitsma@monash.edu</a>	Monash (TEST) Lab: Manager	Flowcore: Admi
Monash	<a href="mailto:nasir.munawar@monash.edu">nasir.munawar@monash.edu</a>	Monash (TEST) Lab: Manager	Flowcore: Admi
Monash	<a href="mailto:nathalie.braussaud@floreys.edu.au">nathalie.braussaud@floreys.edu.au</a>	ARIN (Test Lab): PI, Financial Contact	Flowcore: Admi
Monash	<a href="mailto:Nicole.McMillan@monash.edu">Nicole.McMillan@monash.edu</a>	Monash (TEST) Lab: Manager	Flowcore: Admi
Monash	<a href="mailto:mpj@unimelb.edu.au">mpj@unimelb.edu.au</a>	ARIN (Test Lab): PI, Financial Contact	Gandel Trust: A
Monash	<a href="mailto:rachel.ramsdale@unimelb.edu.au">rachel.ramsdale@unimelb.edu.au</a>	ARIN (Test Lab): PI, Financial Contact	Gandel Trust: A
Monash	<a href="mailto:rvreys@swinburne.edu.au">rvreys@swinburne.edu.au</a>	ARIN (Test Lab): Manager	Gandel Trust: A
Monash	<a href="mailto:Shane.reeve@monash.edu">Shane.reeve@monash.edu</a>	Monash (TEST) Lab: PI, Financial Contact	Gandel Trust: A
Monash	<a href="mailto:shawna.farquharson@floreys.edu.au">shawna.farquharson@floreys.edu.au</a>	ARIN (Test Lab): Manager	Flowcore: Admi
Monash	<a href="mailto:stephen.firth@monash.edu">stephen.firth@monash.edu</a>	Monash (TEST) Lab: PI	Flowcore: Admi
Monash	<a href="mailto:vivien.vasic@hudson.org.au">vivien.vasic@hudson.org.au</a>	Monash (TEST) Lab, Vivien Vasic Group Lab: Manager, Financial contact	Gandel Trust: A
Monash	<a href="mailto:Zeyad.nasa@rmit.edu.au">Zeyad.nasa@rmit.edu.au</a>	ARIN (Test Lab): Manager	Flowcore: Admi





# General user accounts for testing

These general user accounts have only one role and will help to understand the capabilities of distinct user roles

	Affiliation in iLab for testing purposes	Email	Password	Lab member	Facility role
user	Monash	<a href="mailto:monashtestuser@monash.edu">monashtestuser@monash.edu</a>	6TFQ56XxAD	Test Lab 2 (Monash TEST): Lab Manager.	user
manager	Monash	<a href="mailto:testpi@monash.edu">testpi@monash.edu</a>	hDGWRWNM4P	Test Lab 2 (Monash TEST): Lab PI.	user
member	Monash	<a href="mailto:testresearcher@monash.edu">testresearcher@monash.edu</a>	CkP8AAaPX8	Test Lab 2 (Monash TEST): Lab member.	user
	Monash	<a href="mailto:testcoremanager@monash.edu">testcoremanager@monash.edu</a>	awhyugcaBD	Admin (Monash TEST)	Gandel Trust Facility:
	Monash	<a href="mailto:testcoremember@monash.edu">testcoremember@monash.edu</a>	YwcjP2BHjt	Admin (Monash TEST)	Gandel Trust Facility:



# Wash University Landing Page (login and public search)

[my.ilabsolutions.com/landing/63?t=GtJrBSvNVukhcQeH2MRyDZxP85zyqnL7bXCojap6](https://my.ilabsolutions.com/landing/63?t=GtJrBSvNVukhcQeH2MRyDZxP85zyqnL7bXCojap6)

This page is in “private/preview” mode

## **For searching resources, logging in and creating a new account**

Creating user accounts

User accounts are already created for the RFP testing purposes

**User accounts can be created from;**

1. From the Institution and if an ID integration, all user accounts are automatically created upon the first login within institution credentials.  
2. New accounts can be customer initiated from the landing page. Accounts created this way are verified by Agilent (not spam, a real person).  
3. A user account is created by an existing user (lab member) and this is the easiest way to do it (in the absence of an integration)



Agilent Technologies

---

nate login page

<https://my.ilabsolutions.com/account/login>

word reset

ick the appropriate button / link from any of the login pages



Agilent Technologies

## ument Kiosk login

ument kiosk is another way to log in and is typically used when “starti  
on” or “stopping a session” for actual usage tracking.

h interlocks installed, these actions will also act to control a component of the instrument o  
are preventing unauthorised usage.

### Core Instrument Kiosk:

[s://my.ilabsolutions.com/service\\_centers/2941/equipment\\_kiosk/dashboard](https://my.ilabsolutions.com/service_centers/2941/equipment_kiosk/dashboard)

### el Trust Instrument Kiosk:

[s://my.ilabsolutions.com/service\\_centers/2945/equipment\\_kiosk/dashboard](https://my.ilabsolutions.com/service_centers/2945/equipment_kiosk/dashboard)



# onstration Agenda

## General system layout (MC)

### osting Script

- **Researcher tasks**
- View my dashboard
- Scheduling
- Request a service

### Facility manager tasks

- View and edit a users information
- Change facility rules

### Principal Investigator (lab groups)

- Manage research group
- Manage funding source
- Manage invoices

## her System Features



# General System Layout

## Researcher: Test PI

Home page

Test menu

Report menu



Agilent Technologies

## Researcher tasks

### Researcher: Test PI

Make a reservation

Task: Start a reservation

Make a service request



## ility manager tasks

### **ging access requests**

m home page

m facility people tab (show)

### **ire information from Customer.**

### **nstrument rules**

es, access after hours.





# Quality manager tasks

## Create custom pricing for individuals, groups, departments or institutions

Internal and External rules automatically apply based upon the persons affiliation. It is typical to include “Corporate” and some other custom Price Type(s), which people must be added too.

### Create a custom Price Type

This can be done across the whole institution or for specific facilities. In this case we have created Custom 1 and Custom 2. There are no limits on the number of price types that can be created.

### For each facility, add the individual, group, department or institution that is eligible for the custom Price Type

When in Facility / Admin / Pricing Search for the person / group / department / institution, select the appropriate Price Type, click “Share Price”

### For the relevant instrument settings, ensure that the Price Type is “Enabled” for the sessions where you want to apply the special pricing

When you add the special price for the group. When a person, group, department, institution that is eligible schedules time on an instrument that has the Price Type enabled, they will get the special price.

This is currently the Gandel Sequencing Facility 7900 HT PCR r

ARIN (lab) members have special pricing (Custom

These lab members need to be added and be granted access and be trained on the in



# Alternate approach for custom pricing: Create a Centre subsidy

## **Create a centre (iLab)**

### **Set rules for centre**

e.g. price types, eligible platforms, eligible labs, subsidiaries, centre assigned funds (scholarsh

### **Refine the period of time the subsidy applies.**

## **50% Subsidy is set up**

to last the month of May

for all people booking on fund number A00000 7654321 (ARIN Test Lab)  
when making reservations in the Gandel Trust Sequencing Facility.



## res (MC)

### Standard feature

**Supports research within institutional core facilities by allowing center researchers to utilize core facilities at a lower or no cost.**

#### Center Subsidies

- Tracks the transfer of funds from the center to the core, leveraging the integration between the iLab application and the institution's financial ERP

#### Center Price Types

- Assigns center labs a specific price type, that reflects a lower or nominal cost recognized and managed by the core facilities.

#### Center Assigned Funds:

- Allocates and transfers funds to the core facility prior to any work, by which the center can then manage and track the dollar value of services that researchers within specific center labs can use within the core facility



## ility manager tasks

ng access for different times of day

concept in iLab

price type is disabled, people in that price type cannot make reservation  
it usage type

or example, define “outside business hours” and then disable price types who cannot have  
ess at that time. E.g., corporate, external

screenshot example on page 40, Manage “usage types” .



# Agility manager tasks

## Reservations and confirm usage

### 1. Make reservation

- Navigate to calendar
- User will make reservation according to rules
- Optional to use Instrument Kiosk or Reservation Verification Settings (in Instrument settings) which feeds through to next step.

### 2. Confirm Usage

- Usage is recorded and default rule applies, scheduled time, actual time, maximum of two.
- Optional “add-on” charges
- Opportunity to review any flagged reservations and change details

### 3. Billing

- All confirmed events move through to billing events



# Agility manager tasks

## Instrument usage

Table Trust Sequencing Center

Issues Warnings Owner name Source

Resource	Start date	Duration	Usage type	Cost	Source	Review	Status	Confirm
Applied Biosystems 7900HT-Fast Real Time PCR (Applied Biosystems 7900HT (A))	01 Mar 2017 02:30 PM	1.00 hrs	Business hours \$12.50/hr (trained users)	\$12.50	Scheduled	---	Valid	Confirm
Qiagen liquid handling (Qiagen CAS 1200)	30 May 2017 09:00 AM	2.00 hrs	Business hours \$18.00/hr (trained users)	\$36.00	Scheduled	---	Invalid	Confirm
Applied Biosystems 7900HT-Fast Real Time PCR (Applied Biosystems 7900HT (A))	30 May 2017 10:30 AM	5.00 hrs	Business hours \$12.50/hr (trained users)	\$62.50	Scheduled	---	Valid	Confirm
Qiagen liquid handling (Qiagen CAS 1200)	31 May 2017 11:30 AM	2.00 hrs	Business hours \$18.00/hr (trained users)	\$36.00	Core edited	---	Valid	Confirm
Applied Biosystems 7900HT-Fast Real Time PCR (Applied Biosystems 7900HT (A))	31 May 2017 01:30 PM	3.50 hrs	Business hours \$12.50/hr (trained users)	\$43.75	Scheduled	---	Valid	Confirm

Displaying 5 reservations out of 5 total

Load more

Back to core

### Select resources

Type a resource or category name

Show all resources ▾

- Applied Biosystems 7900HT-PCR
- Qiagen liquid handling
- Experion RNA, DNA, and PCR

Apply

1. Use filters to quickly identify items with no issues, or specific issues

2. Click items on row to expand to show more details.

3. Select items and bulk confirm. Confirmed items go to Billing.

4. Filter by instrument



# CT UNIQUE FEATURES



Agilent Technologies

## Access control module (Interlocks)

### Additional module

Included in Monash offer AND configured in this test on the Qiagen Liquid Handling

### Designed to restrict access to instrumentation through the iLab application

creates and IoT network of your instruments

does not require any software to be installed on instrument computer

### Cases include:

preventing unauthorised usage if not trained

ensuring people record actual start and end of session

### Can be used on an instrument-by-instrument basis

Different “interlock” options can be configured depending upon instrument needs.

Includes the Kiosk Start/Stop mechanism.





## Collaborating cores (MC)

### Standard feature

**Ability to link Projects between multiple Core facilities / Platforms within the Institution.**

For example a customer requires a tissue sample to have both histology and genomics. A customer can submit a request, some milestones and services can be via the Histology facility and others can be via the Genomics facility.

After all is completed, the revenue is recognised in the correct core facility. The customer experiences a smoother experience with one request.

**Delivered in : Facility Admin / Collaborating Cores**



## Single entry (MC)

### Standard feature

### Allows quick creation or bulk upload of services

Added items can be assigned to individual and lab group so they are assigned to the correct Funding Source.



## Lead Usage (MC)

### Standard Feature

#### Allows bulk upload of calendar events

Create items in calendar from data from another logging system. Can then still leverage repeat billing process in iLab

Can be used to create new items, or match data from upload to existing reservations.



# ution Networks & Technology Networks

## ard feature

**ink institutions together to enhance resource visibility across instituti**

g. University of Texas System (Similar to VPTN / ARIN)

7 Universities all Using iLab

- Create “Institutional Network” page: [https://utsystem.corefacilities.org/partner\\_landing/2](https://utsystem.corefacilities.org/partner_landing/2)

- Create “Technology Network” page: The proteomics network.

[https://utproteomics.corefacilities.org/partner\\_landing/10](https://utproteomics.corefacilities.org/partner_landing/10)

**created by Institution Administrators**



Agilent Technologies

# CT SCREEN SHOTS



Agilent Technologies

# oving users

## del Charitable Trust Sequencing Center



About Our Core | Schedule Equipment | Request Services | View All Requests | Reservations | People | Reporting | Billing | Admin

<< Bulk Actions | + access to a new customer | Advanced messaging

Displaying 8 out of 8 results. (Page 1 of 1)

Name	Lab	Institution	Email	Telephone
Monash TestUser Graduate Student	Test Lab 2 (Monash TEST) (Manager)	Monash University	monashtestuser@monash.edu	
TestResearcher Graduate Student	Test Lab 2 (Monash TEST) (Manager)	Monash University	testresearcher@monash.edu	
TestCoreMember Staff				
TestPI Principal Investigator				
Testuser PI Monash Graduate Student				
Julie Rothacker Administrator				
Vivien Vasic Administrator				
Gerard (alt) Administrator				

### Access Requests

▼ The Gandel Charitable Trust Sequencing Center

Date:	May 31 '17	Current status:	approved	Can access equipment:	<input type="checkbox"/>	Can access services:	<input checked="" type="checkbox"/>	Training Status:	NOT started
-------	------------	-----------------	----------	-----------------------	--------------------------	----------------------	-------------------------------------	------------------	-------------

Access request note

B I U ↶ ↷

Send email? Enter email text:

B I U ↶ ↷

...track additional access request notes - core use only

Approve (email optional) Update (no email) Reject (no email)

1. Click on P

2. Use filters to find a specific customer

3. Click on the

4. Use check box to determine whether customer can be added to the facility. The override facility settings

5. Click apply. Optionally send email.

# ected features of the core facility page [as a facility admin]

system upgrades (May 2017) | HELP | my profile | logout | Gerard | admin

Go!

Search cores and services...

**HUDSON**  
INSTITUTE OF MEDICAL RESEARCH

About Our Core | Schedule Equipment | Request Services | View All Requests | Reservations | People | Reporting | Billing | Admin

Confirm usage | Message Customers | More

## Schedule Resources

- 1 - To request Sequencing, please go to the Request Services tab and click on Service Requests.
- 2 - Only trained users may schedule use on the Gene Expression equipment. If you require training, please click on the Initiate Training button
- 3 - To record actual usage, please start and stop your session on the Instrument Kiosk.

### Applied Biosystems 7900HT-Fast Real-Time PCR description pricing

- Users can create reservations on this instrument, however training is essential. Please click the Initiate Training button on the right.
- The default charge policy is "scheduled time" and there are no other event verifications required. The Instrument Kiosk is enabled so you can track actual usage, if you wish.
- The Centre uses an Applied Biosystems real-time PCR system for Gene expression and SNP detection.
- The 7900HT is a high throughput PCR instrument equipped with a Fast 96-well and 384-well sample blocks and a Taqman® Low Density Array (TLDA) block.
- The service offers access to the 7900HT instrument and use of is arranged by a calendar.
- A Corbett Research CAS1200 liquid handling instrument is also available for RT-PCR plate set up or to assist with associated projects.



view schedule  
initiate training  
review usage  
upload usage  
take offline

### Qiagen liquid handling description pricing

- Users can create reservations on this instrument, however training is essential. Please click the Initiate Training button on the right.
- These reservations also require logged time. It is preferred if you start and stop your session using the instrument kiosk (see the link above). If you don't record the actual time or verify your times, you may be automatically blocked from future reservations.



view schedule  
initiate training  
review usage  
upload usage  
take offline

1. Click **HELP** to guides or sub support requ

2. Click **pen icon** details

3. Click **heart to** favourite. Favc display on the Reservation p


4. Use the **left** navigation pan access different the system. The dynamic and will based upon y permission



Agilent Technologies

# Facility Administration Settings [as a facility admin]

Level Charitable Trust Sequencing Center



HUDSON  
INSTITUTE OF MEDICAL RESEARCH

About Our Core | Schedule Equipment | Request Services | View All Requests | Reservations | People | Reporting | Billing | Admin

access req

### Access requests

**Require access request**  
Require access requests? If turned on, when a new customer lands on this core, they will be required to submit an access request for approval by a core administrator.

**Required access request message**  
Access request message to customer. Text entered here will be presented to the customer when they submit an access request. You must require access requests for this setting to take effect.

**Custom access request template**  
Access request email template. Text entered here will pre-populate the email field presented to core administration upon access request confirmation. The content can be customized before the email is sent. You must require access requests for this setting to take effect.

0  Yes  No  Yes  No

Reset Apply

1. Click on

2. Expand Setting

3. Search to navigate to

4. There are other settings to explore



Agilent Technologies



# Usage “usage types”

Name of usage type

After hours

Give it a name

the times and days that usage type applies

whether trained status is required

the active price types make reservations at time and set the price.

This scenario only people who are “Internal” or who have been assigned “Custom 1” price type AND who have been trained can use this instrument at these times.

Background color  
2C26D3

Days	Schedule	Requires training?	Actions
Sun-Sat	12:00 AM - 09:00 AM	Yes	Delete  Edit
Sun-Sat	05:00 PM - 12:00 AM	Yes	Delete  Edit
Sun, Sat	09:00 AM - 05:00 PM	Yes	Delete  Edit

+ New

Internal	\$	5.00	<input type="radio"/> PRIVATE
Custom 1	\$	1.00	<input type="radio"/> PRIVATE
MHTP Custom 1	\$	0.00	<input type="radio"/> PRIVATE
External	\$	0.00	<input type="radio"/> PRIVATE
Corporate	\$	0.00	<input type="radio"/> PRIVATE
Custom 2	\$	0.00	<input type="radio"/> PRIVATE
Starting		always	
Ends		always	

Manage



Agilent Technologies

Confidential. Not

Thank you



Agilent Technologies