

# BD FACSDiva Software Quick Reference Guide for BD FACSCanto Systems

This guide contains instructions for using BD FACSDiva™ software version 6.0 and later with BD FACSCanto™ and BD FACSCanto II systems.

## Workflow Overview

The following figure shows the steps for daily workflow using BD FACSDiva software.



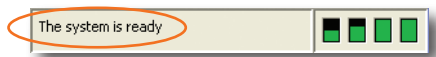
Before starting your daily workflow, ensure that your lab's software administrator has performed all the necessary tasks to set up the software for your use. This guide shows a workflow that uses application settings.



Helping all people  
live healthy lives

## Starting Up the System

- 1 Turn on the cytometer main power.
- 2 Start up the computer, start BD FACSDiva software, and log in.
- 3 Check fluid levels in the Cytometer window.
- 4 Select Cytometer > Fluidics Startup if automatic cleaning is disabled.
- 5 Check the flow cell for air bubbles.
- 6 Check that laser warmup has finished, indicated by a ready status.



## Checking Cytometer Performance


- 1 Select Cytometer > CST.

Verify the Cytometer Configuration and bead Lot ID.

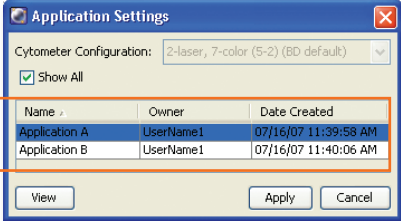
If needed, select a different configuration or bead lot ID.

- 2 Run the BD™ Cytometer Setup and Tracking beads.
- 3 View the Cytometer Performance Report.
- 4 Close the Cytometer Setup and Tracking window.

## Setting Up the Experiment

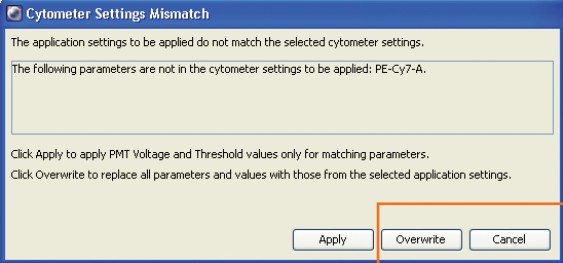
- 1 Select Edit > User Preferences and verify that selected preferences are appropriate.
- 2 Create an experiment in the Browser.
- 3 Right-click  Cytometer Settings in the Browser. Select Application Settings > Apply.

See page 5 for additional information about creating application settings.



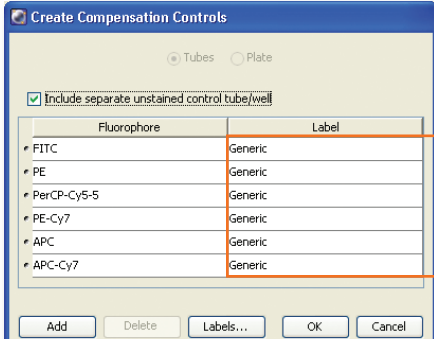
Select an application setting.

Name	Owner	Date Created
Application A	UserName1	07/16/07 11:39:58 AM
Application B	UserName1	07/16/07 11:40:06 AM




Click Overwrite if necessary.

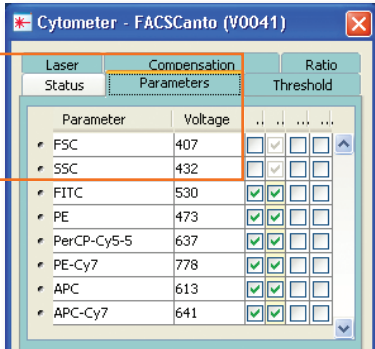
- 4 Select Experiment > Compensation Setup > Create Compensation Controls.



Create label-specific controls as needed.

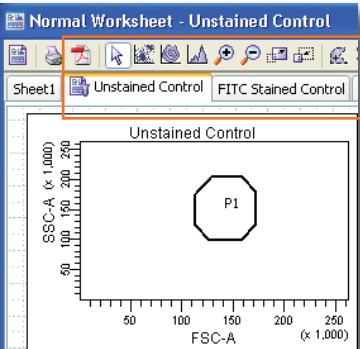
Fluorophore	Label
FITC	Generic
PE	Generic
PerCP-Cy5-5	Generic
PE-Cy7	Generic
APC	Generic
APC-Cy7	Generic

- 5 Install the unstained control tube onto the cytometer. Click .



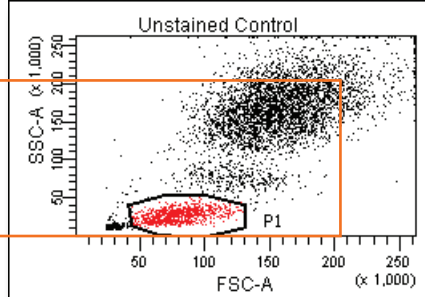
Verify that the FSC, SSC, and threshold settings are appropriate.

Parameter	Voltage	Ratio	Threshold
FSC	407		
SSC	432		
FITC	530		
PE	473		
PerCP-Cy5-5	637		
PE-Cy7	778		
APC	613		
APC-Cy7	641		

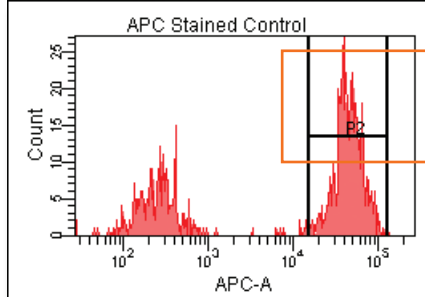


View data in the normal worksheets provided.

- 6 Record data for the compensation control tubes.
- 7 View the recorded data and gate the positive populations.

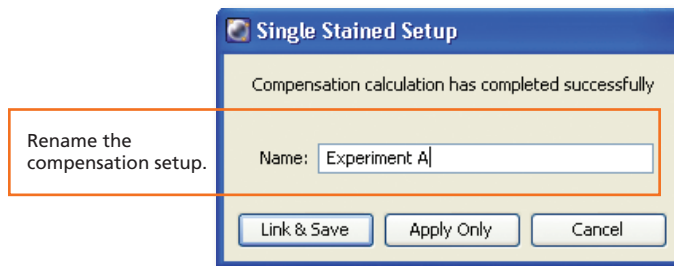


Adjust the P1 gate, right-click, and select Apply to All Compensation Controls.



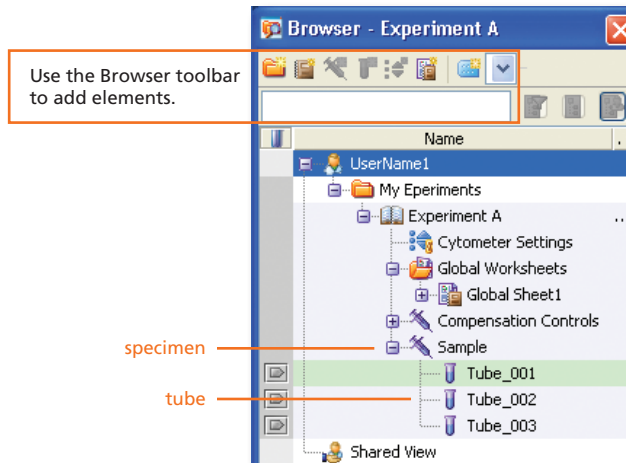
Adjust the P2 gates to fit the positive populations.

- 8 Select Experiment > Compensation Setup > Calculate Compensation.

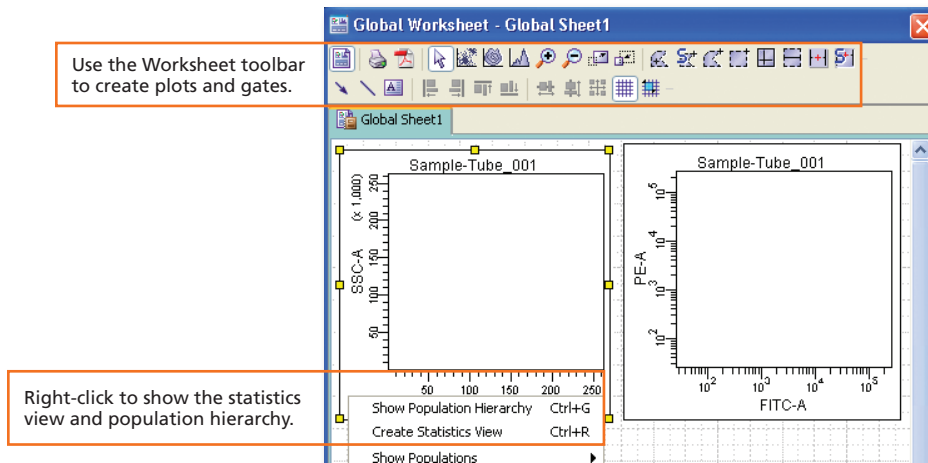


## Recording Specimen Data

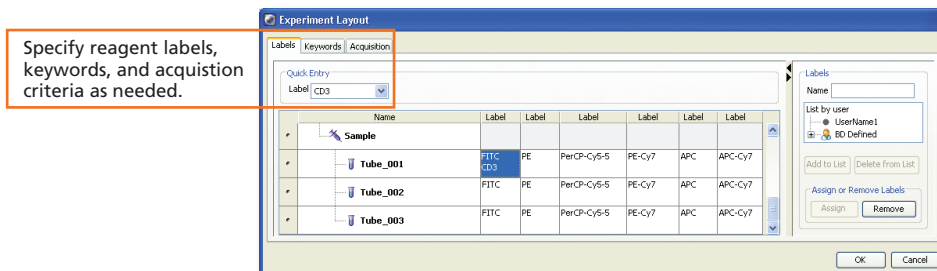
- 1 Create Browser elements.



- 2 Create plots, gates, and statistics needed for recording.



- 3 Make entries in the Experiment Layout.



- 4 Record data.

## Analyzing Data

- 1 Create plots, gates, and statistics needed for analysis.

Create new global worksheets.

Customize plots using the Plot Inspector.

Create custom text and graphics.

- 2 Perform quality control of the analysis.

Verify that gates are set appropriately for all samples.

Use the population hierarchy to verify parent/child relationships.

Population	#Events	%Parent	%Total
All Events	10,000	###	100.0
Parent	1,867	18.7	18.7
Child A	128	6.9	1.3
Child B	219	11.7	2.2

- 3 Do one of the following to print or export the results.

- Select File > Print to print the active worksheet.
- Select File > Export to export selected elements.
- Right-click a specimen or experiment and select Batch Analysis (using a global worksheet).

Specify where to save the PDF and exported statistics files.

Select to print, save as a PDF, or export the statistics as needed.

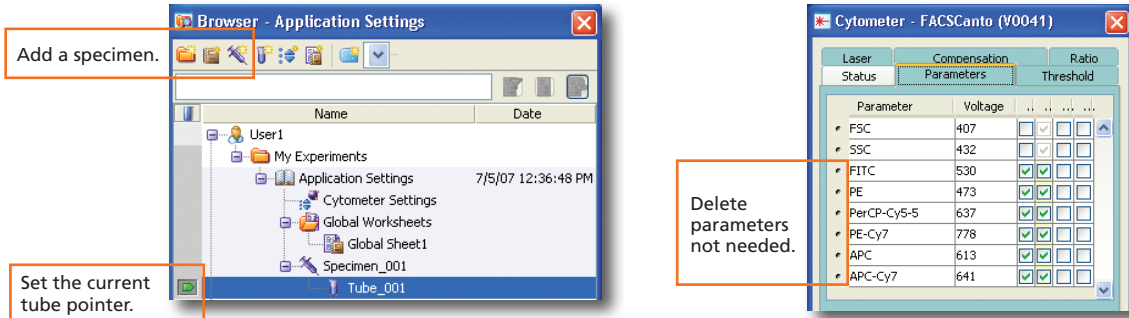
## Shutting Down the System

- 1 Perform a fluidics shutdown.
- 2 Empty the waste and refill fluids if prompted to do so.
- 3 Turn off the cytometer main power and shut down the computer.

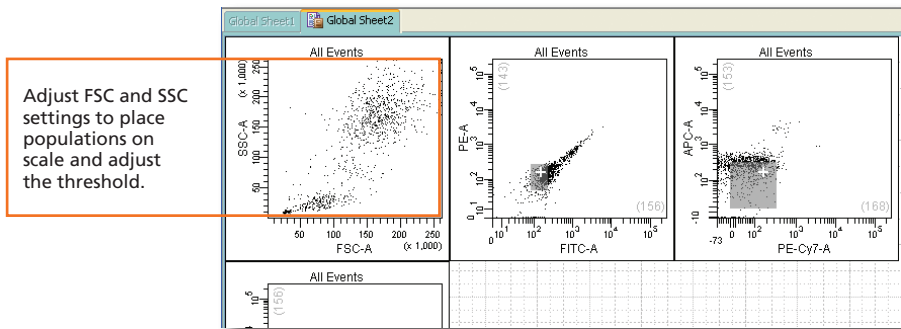
# Creating Application Settings

Before creating application settings, perform the cytometer startup procedure according to your cytometer user's guide and run a performance check.

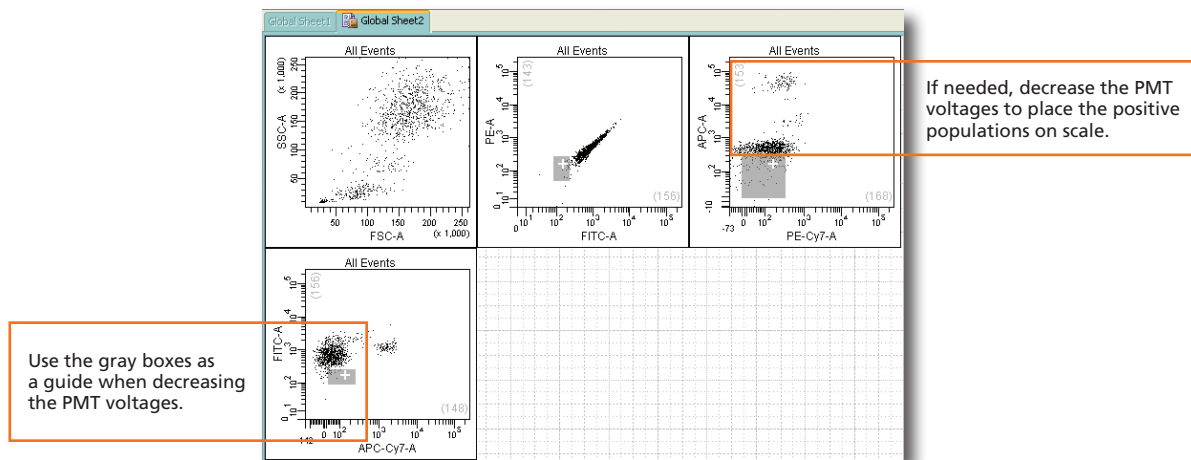
- 1 Create a new experiment.



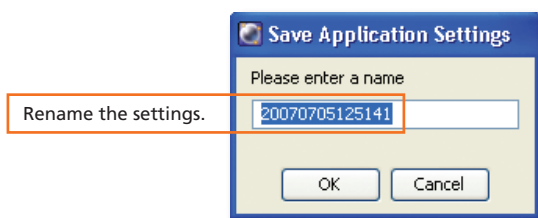
- 2 Right-click **Cytometer Settings** in the Browser. Select Application Settings > Create Worksheet.
- 3 Install the unstained control onto the cytometer. Click **Acquire Data**.
- 4 Adjust the cytometer settings.



- 5 Acquire single-stained controls.

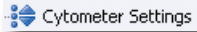


- 6 Right-click **Cytometer Settings** in the Browser. Select Application Settings > Save.



# Cytometer Settings Overview

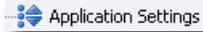
## Cytometer Settings Icons in the Browser



Default or user-defined settings are applied.



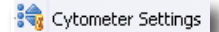
CS&T defined settings are applied.



User-defined application settings have been applied.



A compensation setup has been linked to the application settings.



A compensation setup has been linked to the cytometer settings.

## Cytometer Setups in the Catalog

<i>Setting type</i>	<i>Description</i>	<i>When to save</i>	<i>How to save</i>	<i>How to apply</i>	<i>What is saved</i>		
					<i>Parameters, PMTV, and threshold</i>	<i>Area scaling and laser delay**</i>	<i>Compensation</i>
Application Settings	User-optimized settings for sample type and reagent combination. CS&T updates these settings to account for daily variations.	Create once for each application you are running.  Verify the settings after defining a base-line and when you change reagent lots.	Right-click the Cytometer Settings in the Browser and select Application Settings > Save.	Right-click the Cytometer Settings in the Browser and select Application Settings > Apply. Select an application setting from the catalog.	✓	✓*	—
Compensation Setup	Settings that include automatically calculated compensation values created by BD FACSDiva software using single-stained controls.  Not updated by CS&T.	Create daily for each experiment.	Select Experiment > Compensation Setup > Calculate Compensation. In the Single Stained dialog, select Link & Save.	Right-click the Cytometer Settings in the Browser and select Link Setup. Select a compensation setup from the catalog.	✓	✓	✓
Cytometer Settings	User-optimized settings, not updated by CS&T or linked to a compensation setup.	As needed.	Right-click the Cytometer Settings in the Browser and select Save to Catalog.	Right-click the Cytometer Settings in the Browser and select Apply from Catalog. Select a cytometer settings from the catalog.	✓	✓	✓

\* The area scaling is adjusted for the CS&T beads only. You may need to readjust this setting for your cell type.

\*\* The latest optimized laser delay setting is always used on the cytometer. When the saved cytometer settings are re-applied, the laser delay does not change to the value saved with the settings. The laser delay setting is saved for reference only.