

# Cytometer Baseline Report

Cytometer:	LSRII	User:	Administrator
Cytometer Name:	LSRII-B Bullwinkle	Institution:	BD Biosciences
Serial Number:	H47800061	Software:	BD FACSDiva 8.0.1
Input Device:	HTS	Date:	06/12/2015 12:59 PM
Tube Loaded Manually:	Yes		
Cytometer Configuration:	03202015-H4780061 4-B 6V-6UV 2-R (LEGO)		

## Setup Beads

**Bead Product:** CST Setup Beads    **Part #:** 910858  
**Lot ID:** 82950    **Expiration Date:** 03/31/2016  
**Bead Lot Information:** Available

## Detector Settings

Laser	Detector	Parameter	PMTV	New Target Value	Old Target Value	Bright Bead %Robust CV	Mid Bead Median Channel	Mid Bead % Robust CV	Dim Bead Median Channel	Dim Bead % Robust CV
Blue	FSC	FSC	663	125000	N/A	3.16	131546	3.14	22023	14.92
Blue	E	SSC	356	125000	N/A	2.76	114700	2.75	58917	2.18
Blue	D	FITC	542	20994	N/A	3.72	492	33.02	88	144.51
Blue	C	PE	577	26971	N/A	2.53	540	30.39	135	104.15
Blue	B	PE-CF594	688	20841	N/A	3.52	407	28.92	101	79.83
Blue	A	PE-Cy7	624	35064	N/A	6.55	419	65.83	68	267.35
Red	B	APC	606	46660	N/A	2.95	994	18.05	256	40.8
Red	A	APC-Cy7	639	33135	N/A	4.66	505	21.94	114	54.62
Violet	F	BV421	387	4809	N/A	4.4	421	13.96	70	61.16
Violet	E	BV510	445	32764	N/A	3.27	968	8.36	118	39.54
Violet	D	BV605	691	58460	N/A	4.96	1434	32.51	220	147.67
Violet	C	BV650	585	72473	N/A	4.95	2534	12.78	302	46.25
Violet	B	BV711	447	25274	N/A	6.76	658	11.91	86	39.33
Violet	A	BV786	582	56796	N/A	9.7	608	22.35	107	68.05
355 UV	F	BUV395	542	9725	N/A	3.92	1168	10.17	148	51.44
355 UV	E	BUV496	530	13069	N/A	5.39	860	57.01	111	413.51
355 UV	D	BUV563	603	18281	N/A	4.73	627	78.82	97	487.3
355 UV	C	BUV661	662	28800	N/A	7.91	828	41.53	127	207.04
355 UV	B	BUV737	764	52975	N/A	9.34	949	43.01	162	155.16
355 UV	A	BUV805	896	237697	N/A	12.87	2344	97.25	349	459.19

## Detector Settings (Continued)

Laser	Detector	Parameter	Linearity Min Channel	Linearity Max Channel	Slope	Intercept	Electronic Noise Robust SD	Qr	Br
Blue	FSC	FSC	N/A	N/A	0.0039	2.5	N/A	N/A	N/A
Blue	E	SSC	N/A	N/A	7.8330	-14.9	N/A	N/A	N/A
Blue	D	FITC	189	53066	7.7975	-17.0	32.8	0.0118	1850
Blue	C	PE	24	239996	7.6147	-16.6	24.9	0.0730	802
Blue	B	PE-CF594	43	229603	7.5313	-17.1	20.8	0.0072	973
Blue	A	PE-Cy7	143	238367	7.8203	-17.3	21.4	0.0070	233
Red	B	APC	54	244714	7.6948	-16.7	18.5	0.0170	322
Red	A	APC-Cy7	38	240834	7.6487	-16.9	15.2	0.0022	1535

# Cytometer Baseline Report

**Cytometer:** LSRII  
**Cytometer Name:** LSRII-B Bullwinkle  
**Serial Number:** H47800061  
**Input Device:** HTS  
**Tube Loaded Manually:** Yes  
**Cytometer Configuration:** 03202015-H4780061 4-B 6V-6UV 2-R (LEGO)

**User:** Administrator  
**Institution:** BD Biosciences  
**Software:** BD FACSDiva 8.0.1  
**Date:** 06/12/2015 12:59 PM

Violet	F	BV421	79	255418	7.8568	-16.6	14.3	0.0393	2854
Violet	E	BV510	22	249616	7.6100	-15.6	18.3	0.0375	3967
Violet	D	BV605	74	242483	7.7690	-17.3	20.9	0.1830	60
Violet	C	BV650	82	248488	7.7045	-16.5	23.6	0.1337	73
Violet	B	BV711	54	250277	7.7350	-16.1	16.4	0.5492	29
Violet	A	BV786	34	250076	7.7510	-16.7	22.9	0.2041	34
355 UV	F	BUV395	54	248109	7.8396	-17.4	14.6	0.1414	640
355 UV	E	BUV496	42	70029	8.0251	-17.7	14.9	0.0251	5172
355 UV	D	BUV563	80	114104	7.7938	-17.4	14.2	0.0280	6226
355 UV	C	BUV661	20	236746	7.6378	-17.1	14.5	0.0153	939
355 UV	B	BUV737	126	232311	7.6429	-17.3	15.6	0.0081	346
355 UV	A	BUV805	442	236210	7.6870	-17.3	155	0.0008	1645

## Specifications

**Blue Laser Primary Channel Bright Bead %Robust CV:** 6.00 (Recommended)  
**Violet Laser Primary Channel Bright Bead %Robust CV:** 6.00 (Recommended)  
**355 UV Laser Primary Channel Bright Bead %Robust CV:** 6.00 (Recommended)  
**Red Laser Primary Channel Bright Bead %Robust CV:** 6.00 (Recommended)

## Laser Settings

Laser	Delay (Trigger on FSC)	Delay (Trigger on Fluorescence)	Area Scaling Factor
Blue	0.00	0.00	1.12
Violet	24.37	24.49	0.88
355 UV	48.12	48.28	0.76
Red	69.89	70.06	0.86

**Window Extension:** 10.00  
**FSC Area Scaling Factor:** 0.90

## Threshold

**Threshold (FSC):** 9530

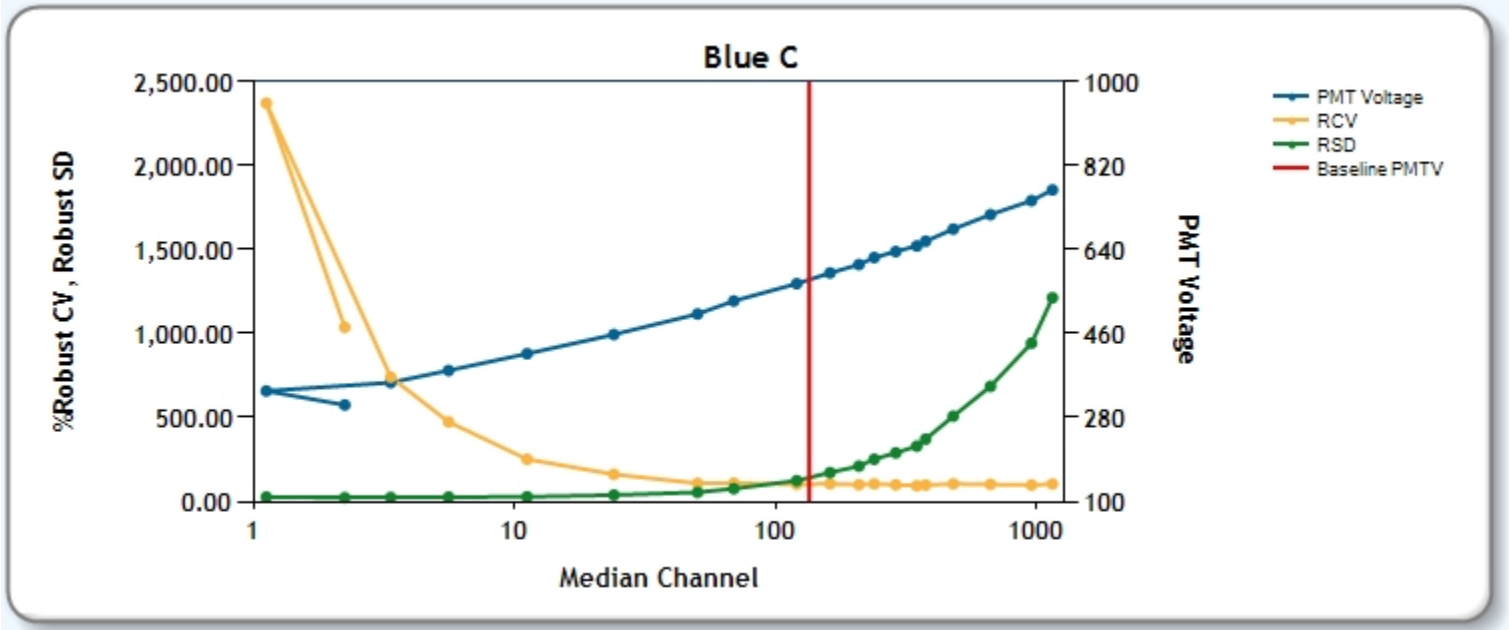
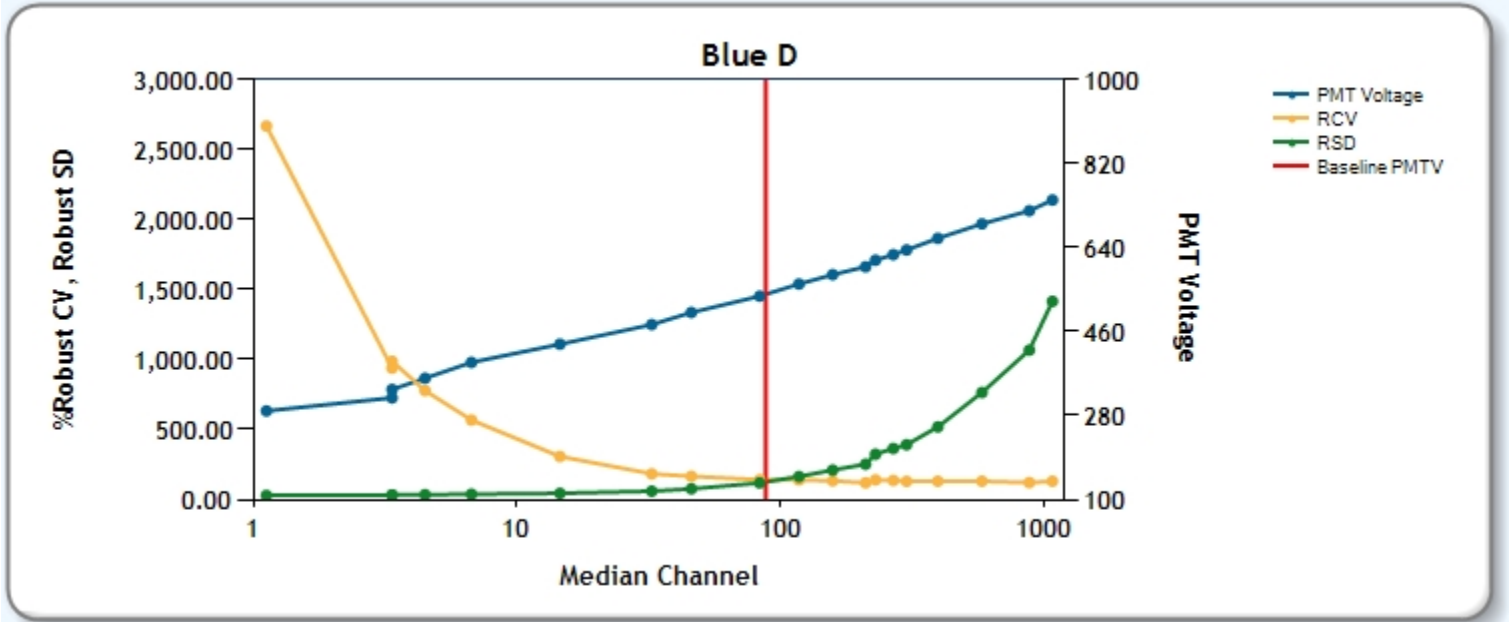
Comments

# Cytometer Baseline Report

Cytometer: LSRII  
 Cytometer Name: LSRII-B Bullwinkle  
 Serial Number: H47800061  
 Input Device: HTS  
 Tube Loaded Manually: Yes  
 Cytometer Configuration: 03202015-H4780061 4-B 6V-6UV 2-R (LEGO)

User: Administrator  
 Institution: BD Biosciences  
 Software: BD FACSDiva 8.0.1  
 Date: 06/12/2015 12:59 PM

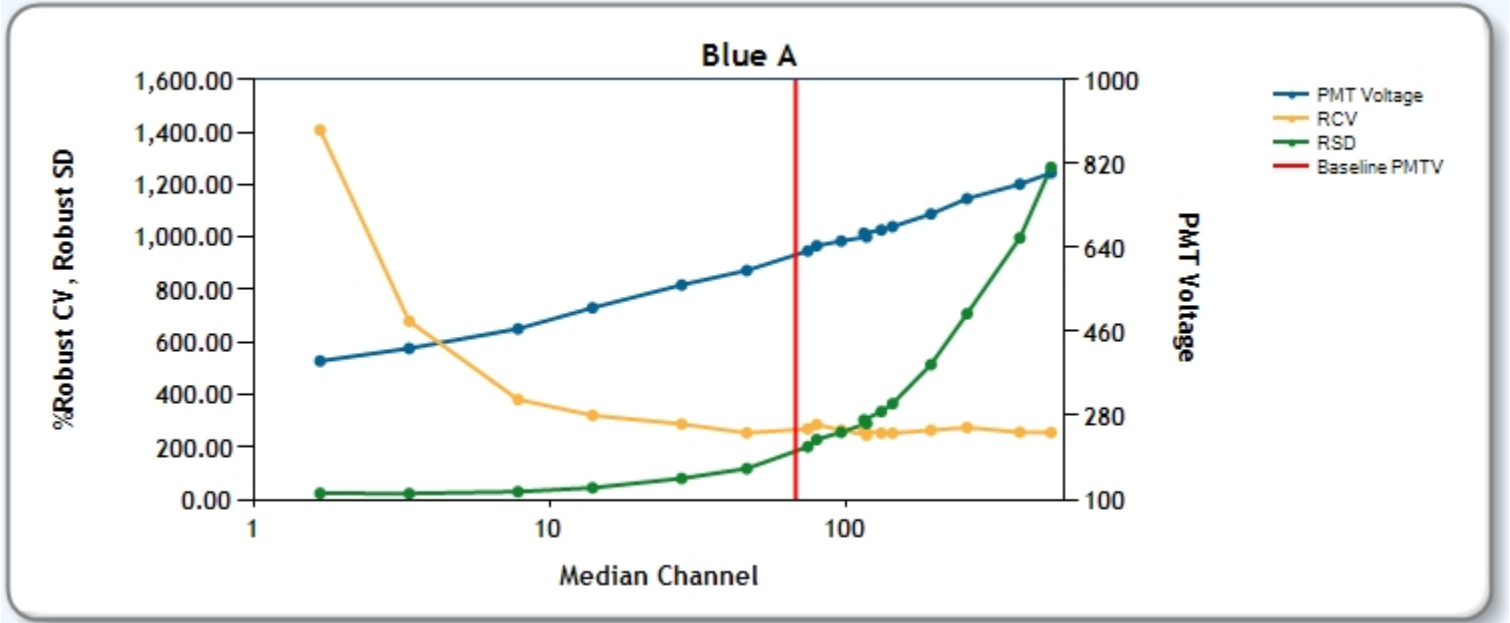
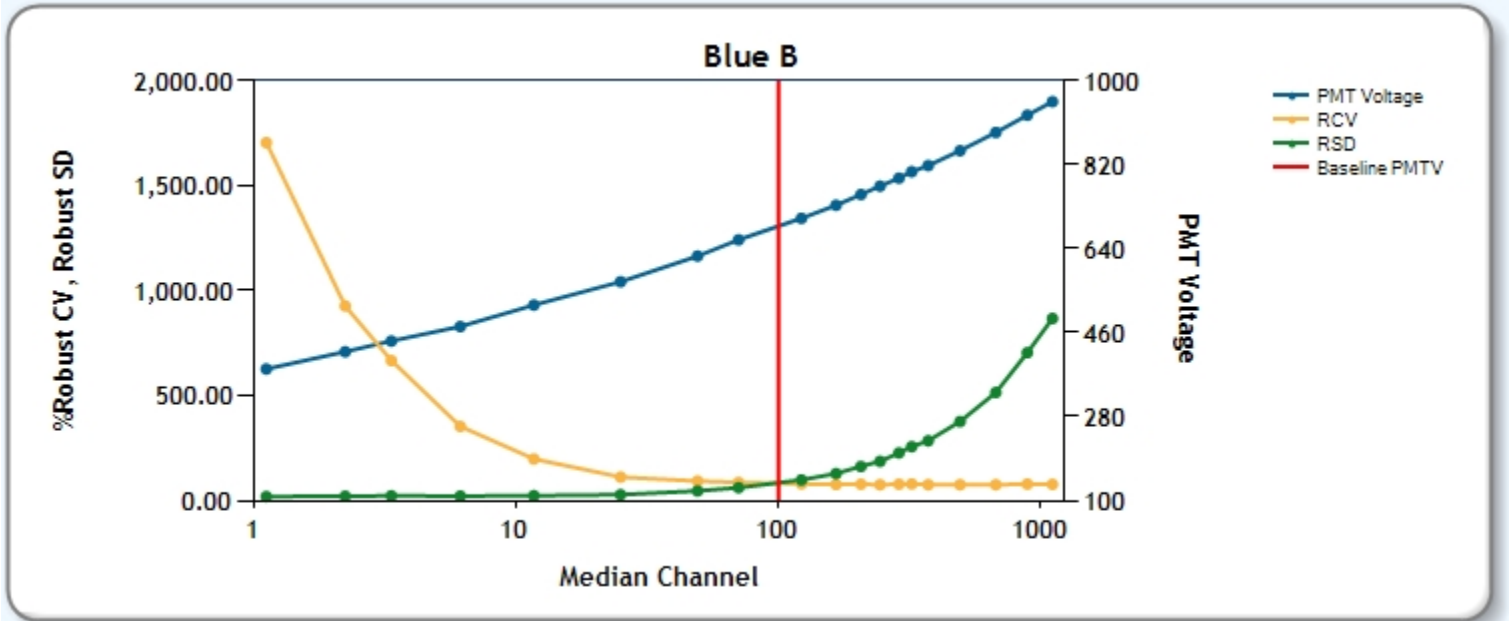
## PMTV Optimization Results



# Cytometer Baseline Report

Cytometer: LSRII  
 Cytometer Name: LSRII-B Bullwinkle  
 Serial Number: H47800061  
 Input Device: HTS  
 Tube Loaded Manually: Yes  
 Cytometer Configuration: 03202015-H4780061 4-B 6V-6UV 2-R (LEGO)

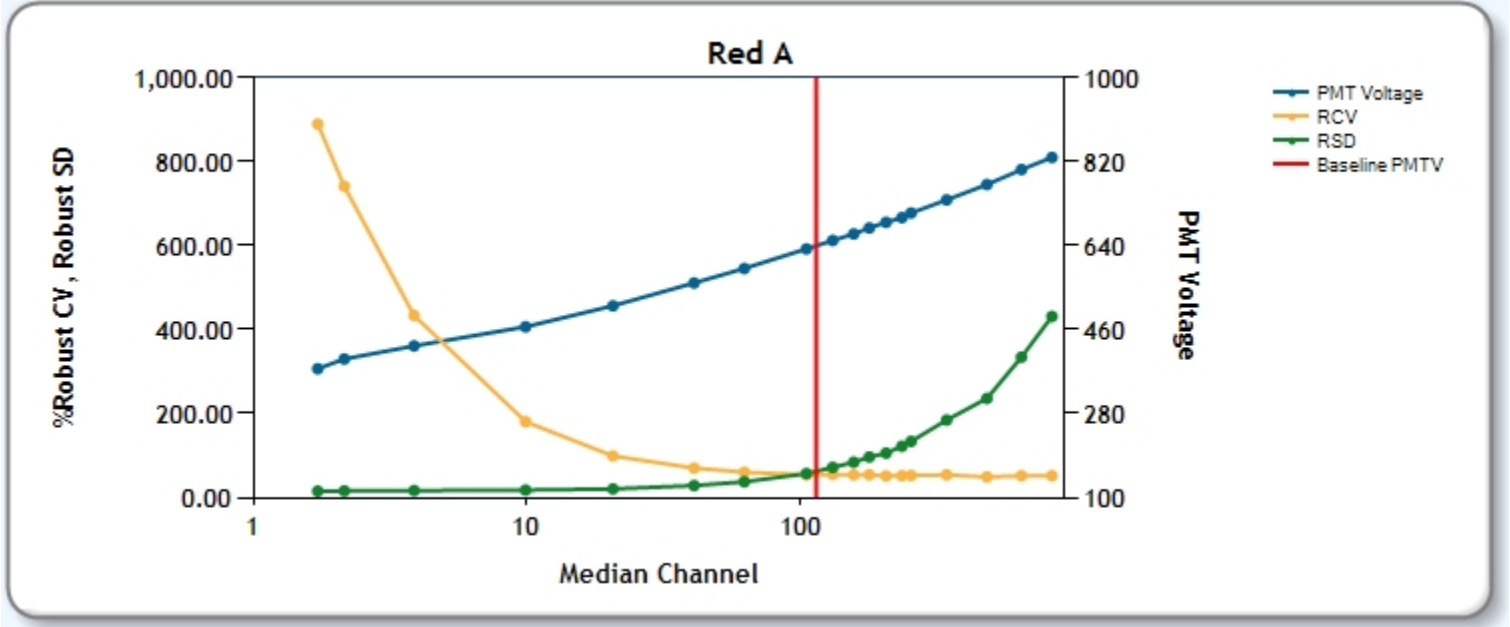
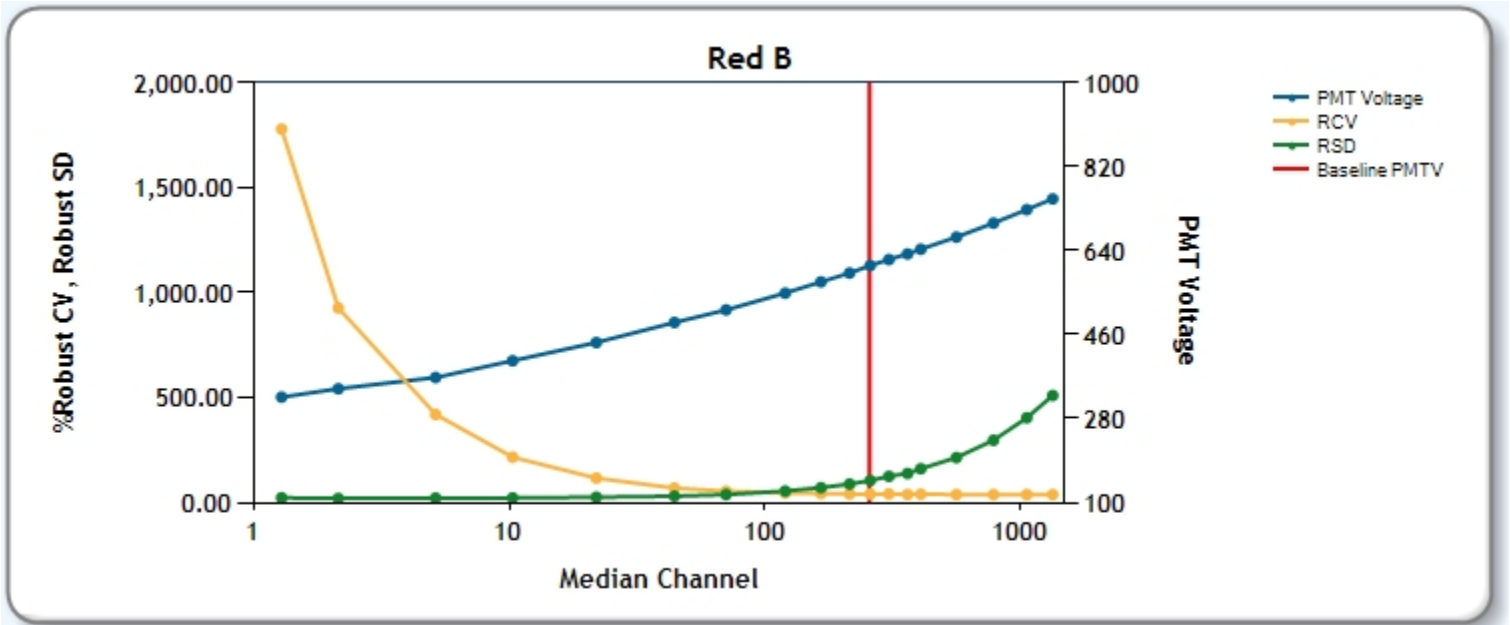
User: Administrator  
 Institution: BD Biosciences  
 Software: BD FACSDiva 8.0.1  
 Date: 06/12/2015 12:59 PM



# Cytometer Baseline Report

Cytometer: LSRII  
 Cytometer Name: LSRII-B Bullwinkle  
 Serial Number: H47800061  
 Input Device: HTS  
 Tube Loaded Manually: Yes  
 Cytometer Configuration: 03202015-H4780061 4-B 6V-6UV 2-R (LEGO)

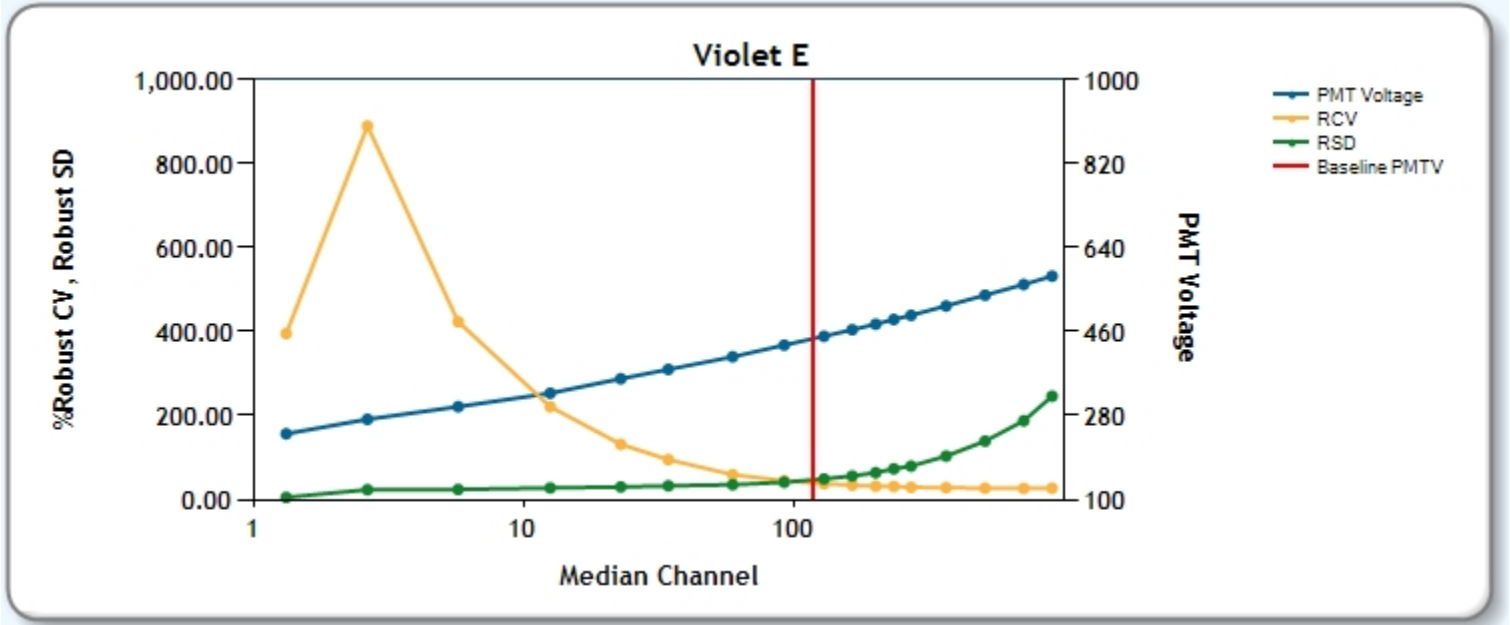
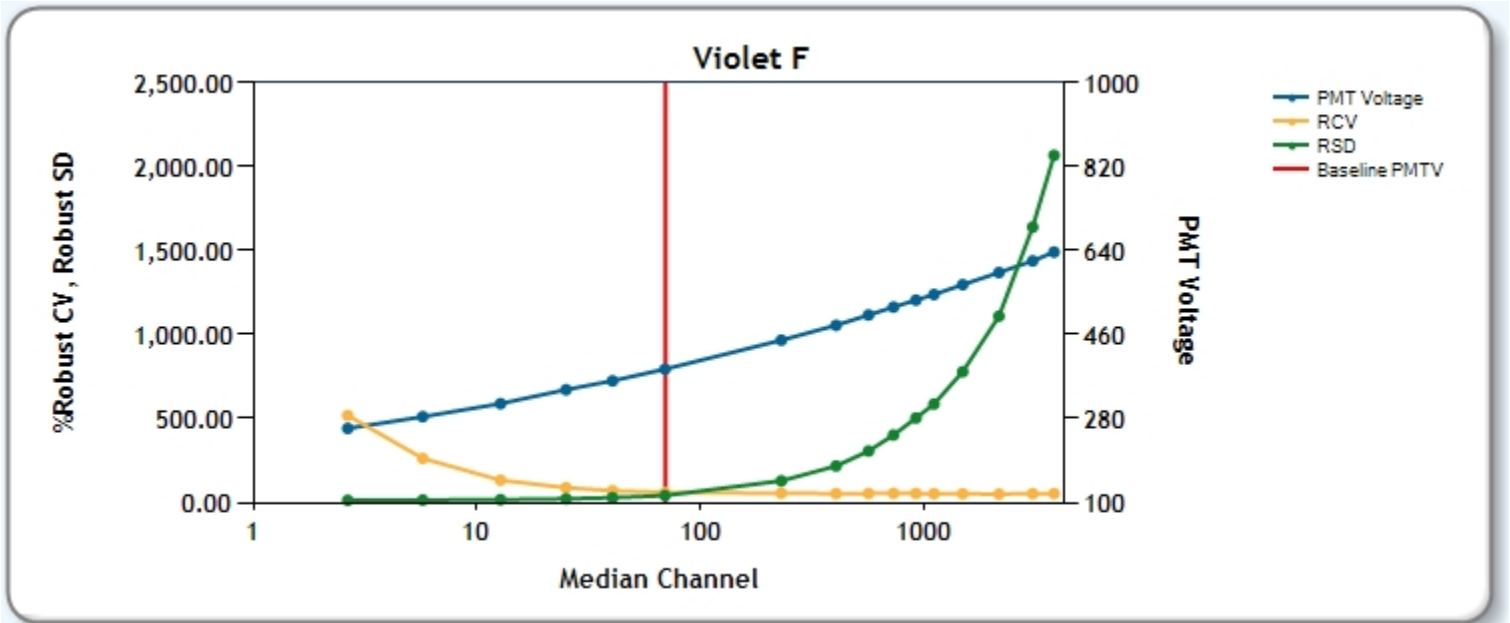
User: Administrator  
 Institution: BD Biosciences  
 Software: BD FACSDiva 8.0.1  
 Date: 06/12/2015 12:59 PM



# Cytometer Baseline Report

Cytometer: LSR II  
 Cytometer Name: LSR II-B Bullwinkle  
 Serial Number: H47800061  
 Input Device: HTS  
 Tube Loaded Manually: Yes  
 Cytometer Configuration: 03202015-H4780061 4-B 6V-6UV 2-R (LEGO)

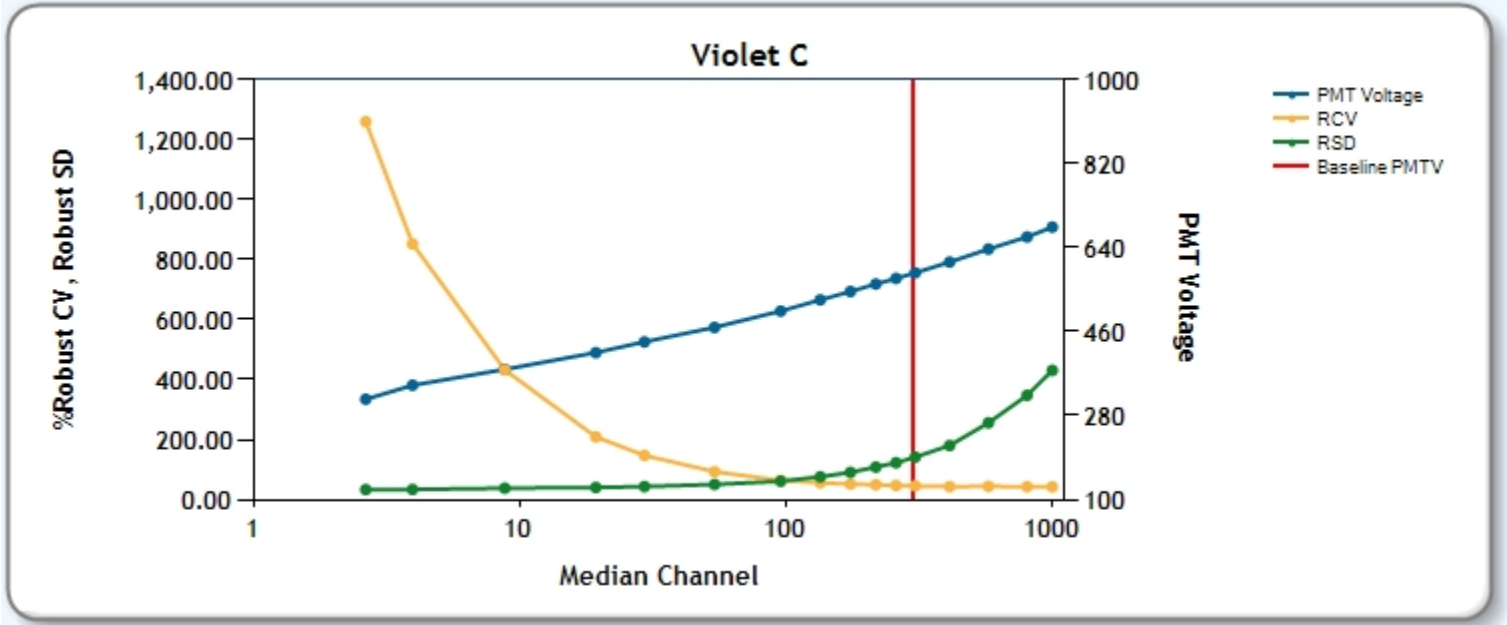
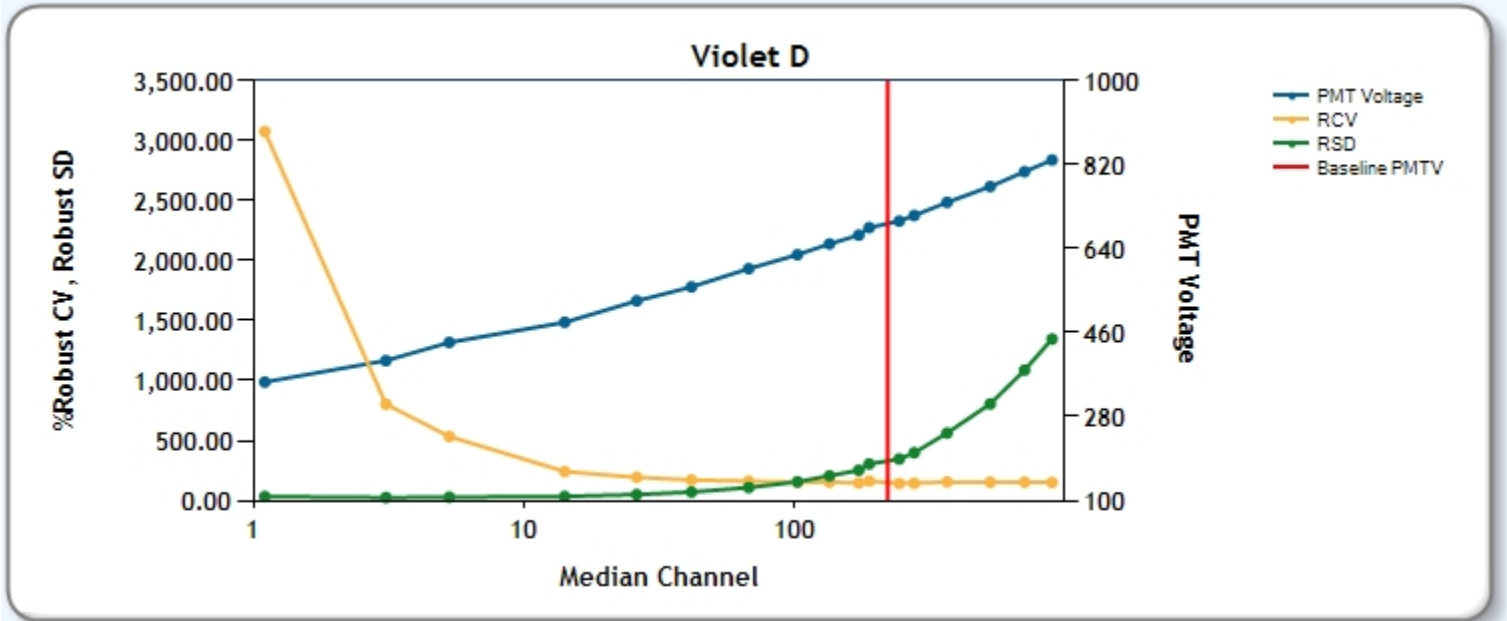
User: Administrator  
 Institution: BD Biosciences  
 Software: BD FACSDiva 8.0.1  
 Date: 06/12/2015 12:59 PM



# Cytometer Baseline Report

Cytometer: LSRII  
 Cytometer Name: LSRII-B Bullwinkle  
 Serial Number: H47800061  
 Input Device: HTS  
 Tube Loaded Manually: Yes  
 Cytometer Configuration: 03202015-H4780061 4-B 6V-6UV 2-R (LEGO)

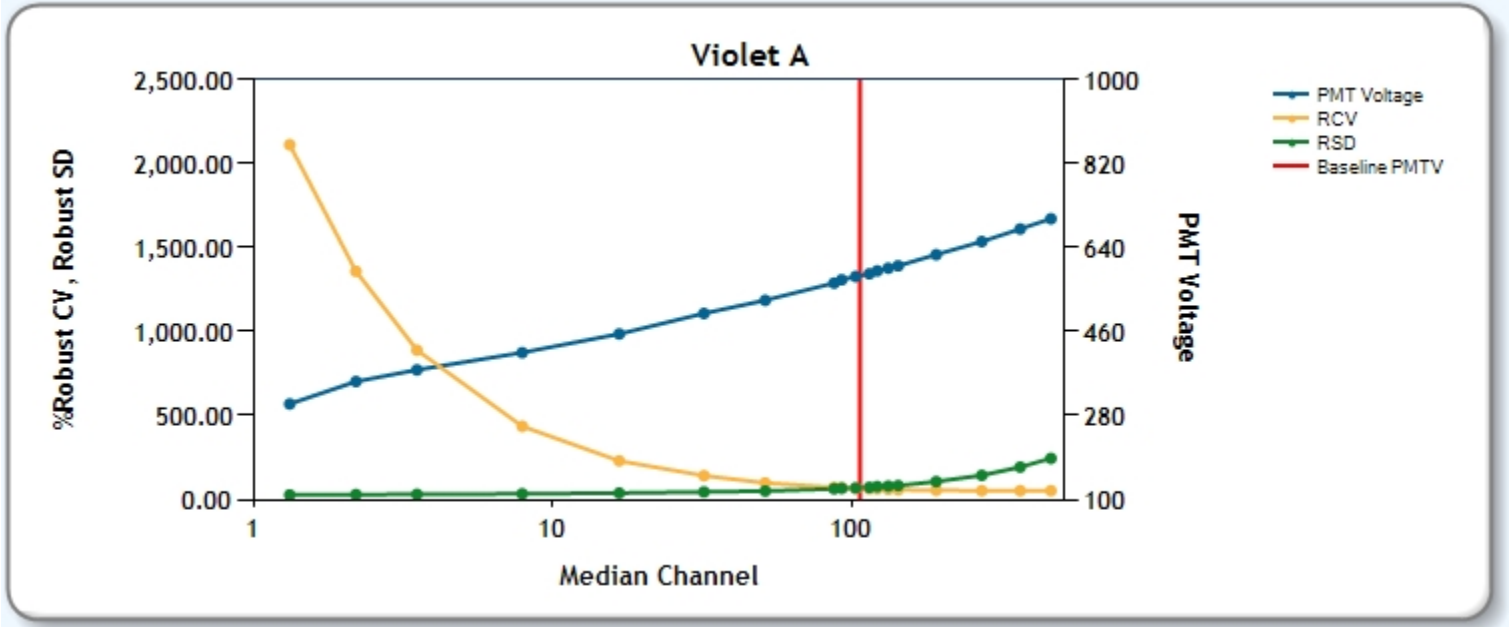
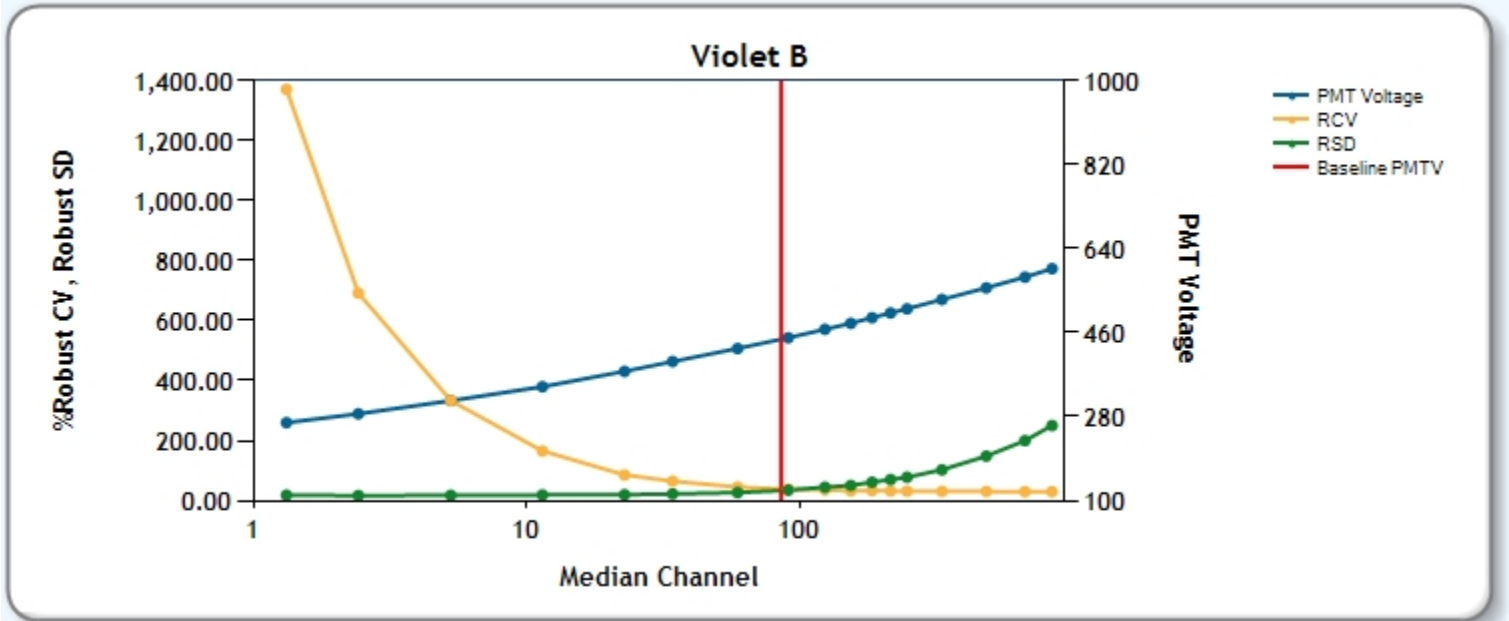
User: Administrator  
 Institution: BD Biosciences  
 Software: BD FACSDiva 8.0.1  
 Date: 06/12/2015 12:59 PM



# Cytometer Baseline Report

Cytometer: LSRII  
 Cytometer Name: LSRII-B Bullwinkle  
 Serial Number: H47800061  
 Input Device: HTS  
 Tube Loaded Manually: Yes  
 Cytometer Configuration: 03202015-H4780061 4-B 6V-6UV 2-R (LEGO)

User: Administrator  
 Institution: BD Biosciences  
 Software: BD FACSDiva 8.0.1  
 Date: 06/12/2015 12:59 PM

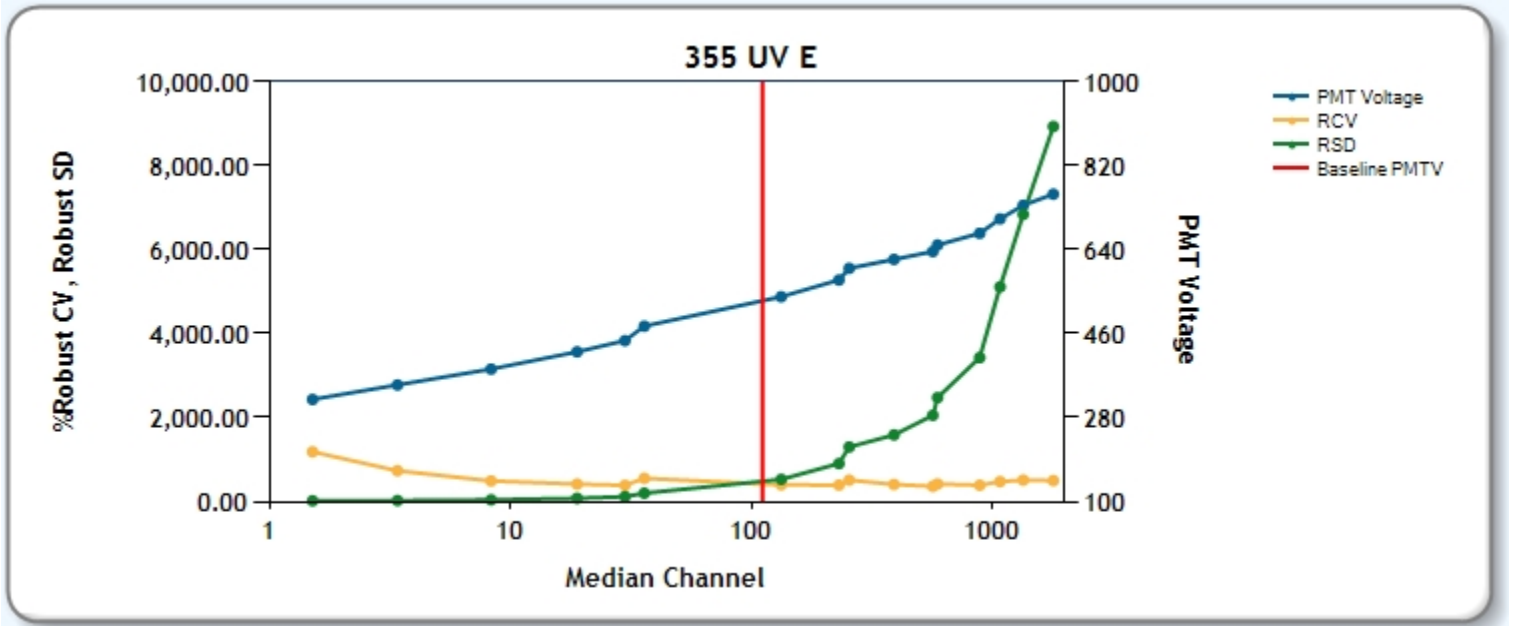
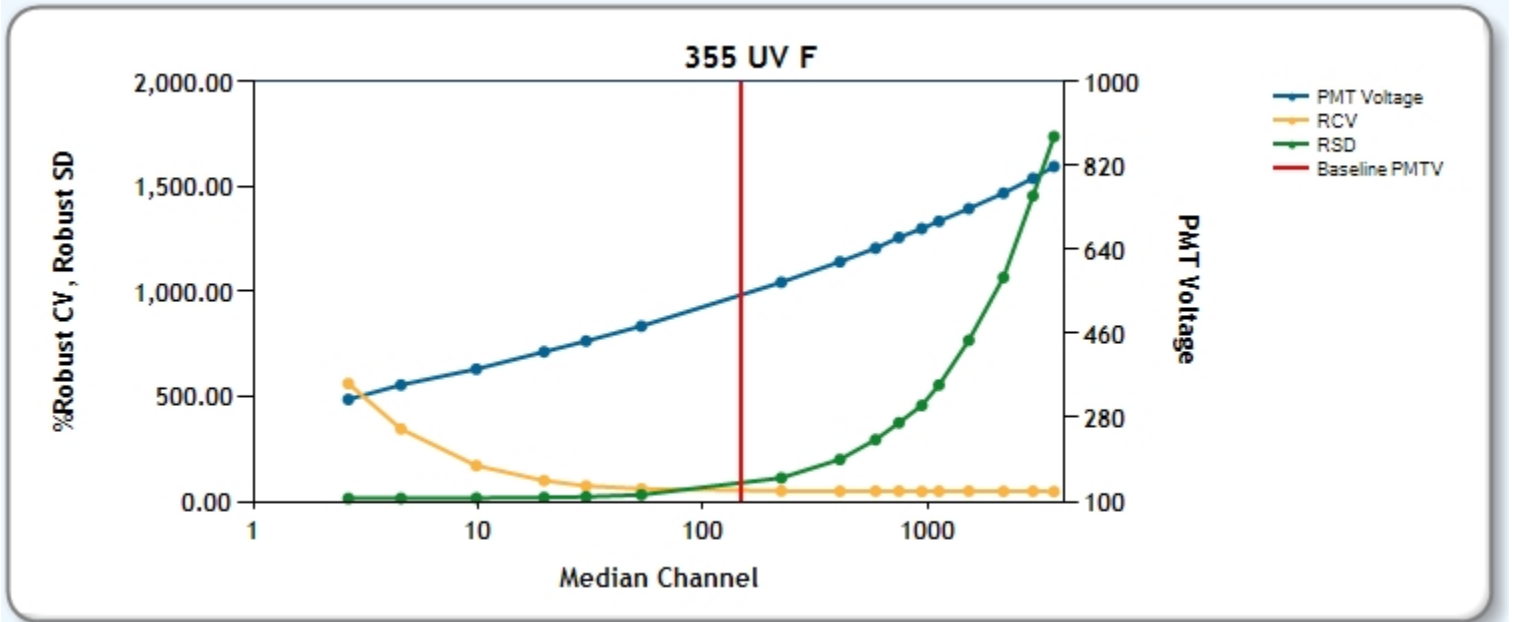




# Cytometer Baseline Report

Cytometer: LSRII  
 Cytometer Name: LSRII-B Bullwinkle  
 Serial Number: H47800061  
 Input Device: HTS  
 Tube Loaded Manually: Yes  
 Cytometer Configuration: 03202015-H4780061 4-B 6V-6UV 2-R (LEGO)

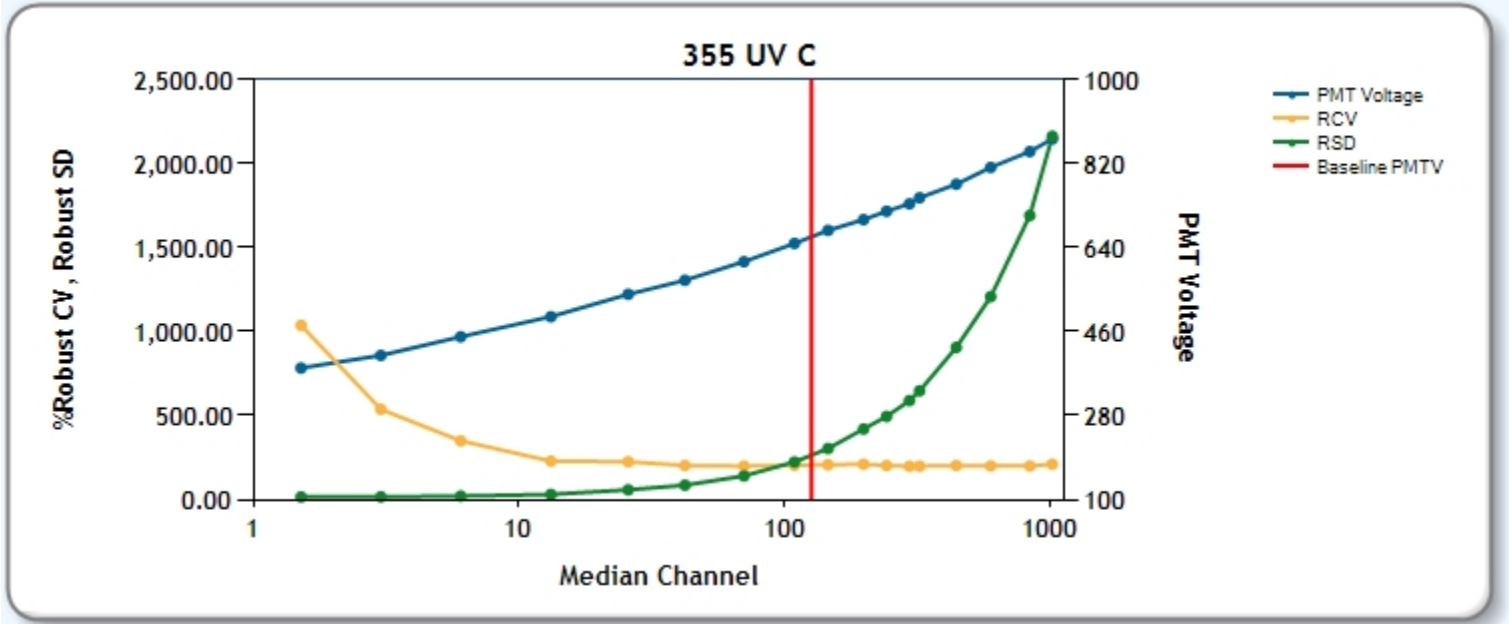
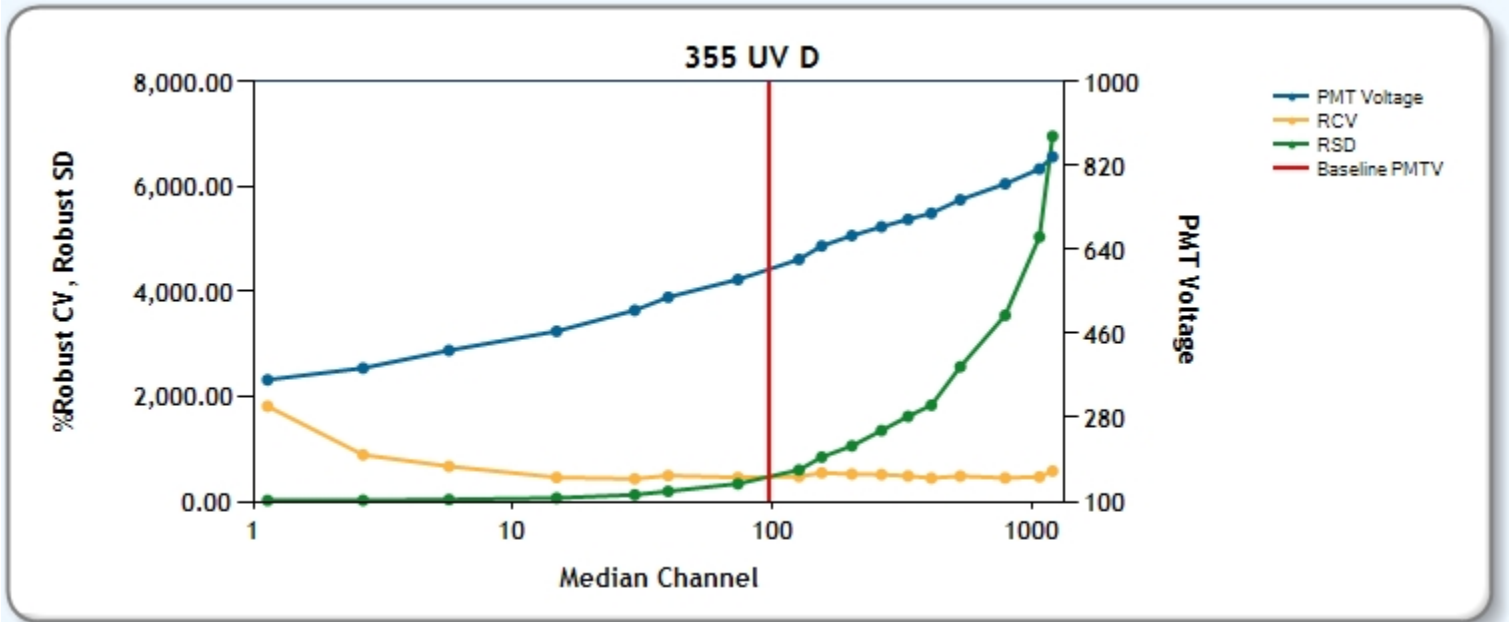
User: Administrator  
 Institution: BD Biosciences  
 Software: BD FACSDiva 8.0.1  
 Date: 06/12/2015 12:59 PM



# Cytometer Baseline Report

Cytometer: LSRII  
 Cytometer Name: LSRII-B Bullwinkle  
 Serial Number: H47800061  
 Input Device: HTS  
 Tube Loaded Manually: Yes  
 Cytometer Configuration: 03202015-H4780061 4-B 6V-6UV 2-R (LEGO)

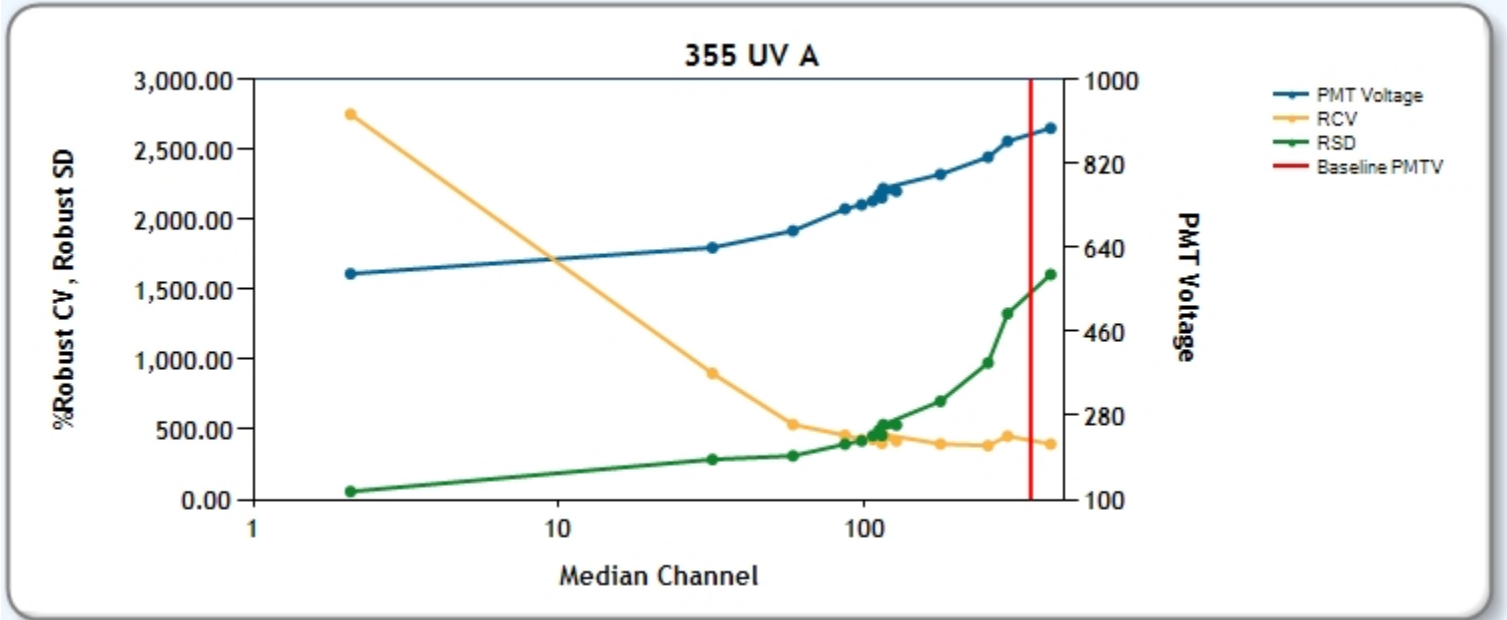
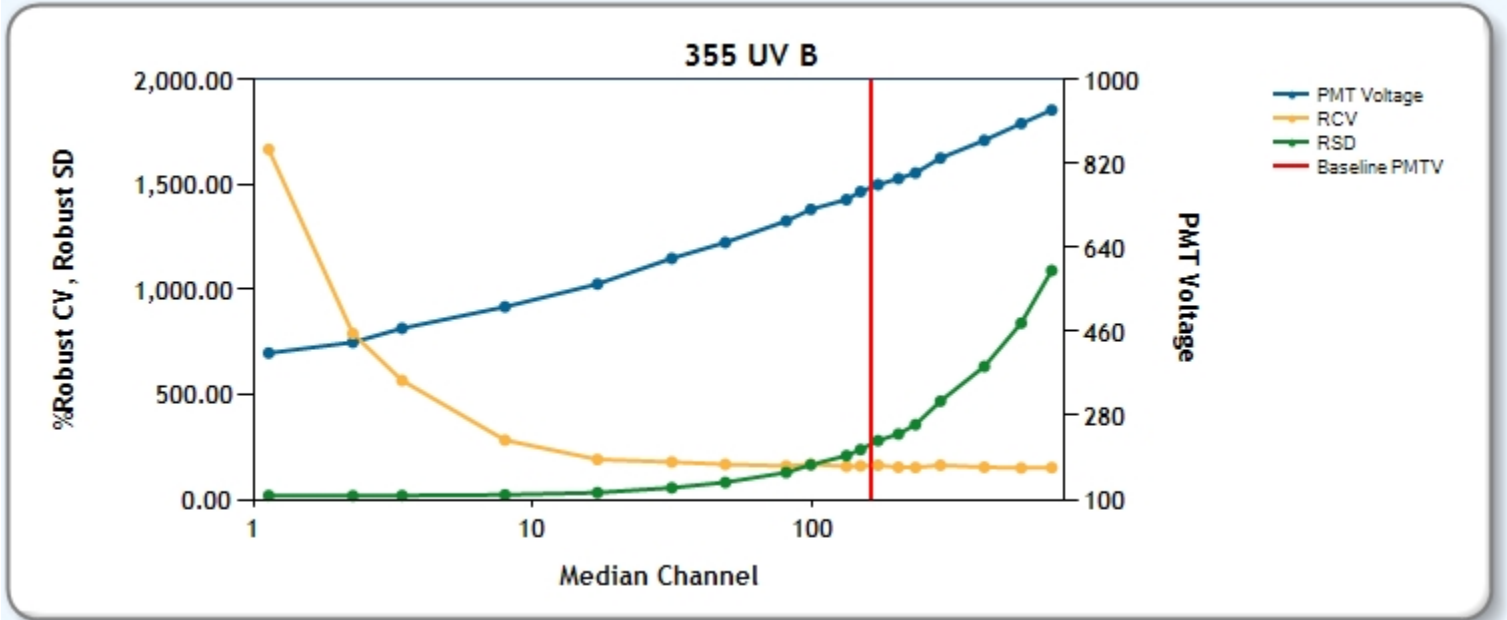
User: Administrator  
 Institution: BD Biosciences  
 Software: BD FACSDiva 8.0.1  
 Date: 06/12/2015 12:59 PM



# Cytometer Baseline Report

Cytometer: LSRII  
 Cytometer Name: LSRII-B Bullwinkle  
 Serial Number: H47800061  
 Input Device: HTS  
 Tube Loaded Manually: Yes  
 Cytometer Configuration: 03202015-H4780061 4-B 6V-6UV 2-R (LEGO)

User: Administrator  
 Institution: BD Biosciences  
 Software: BD FACSDiva 8.0.1  
 Date: 06/12/2015 12:59 PM

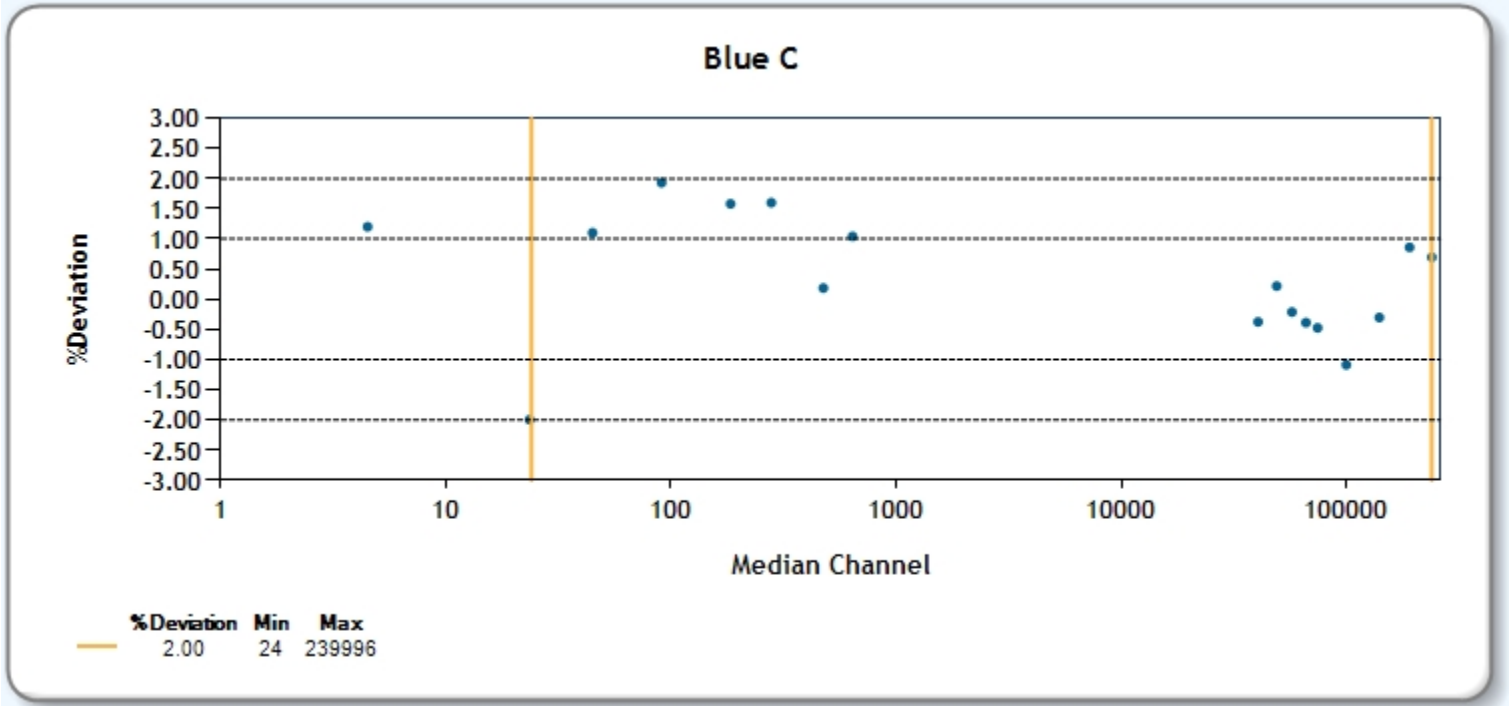
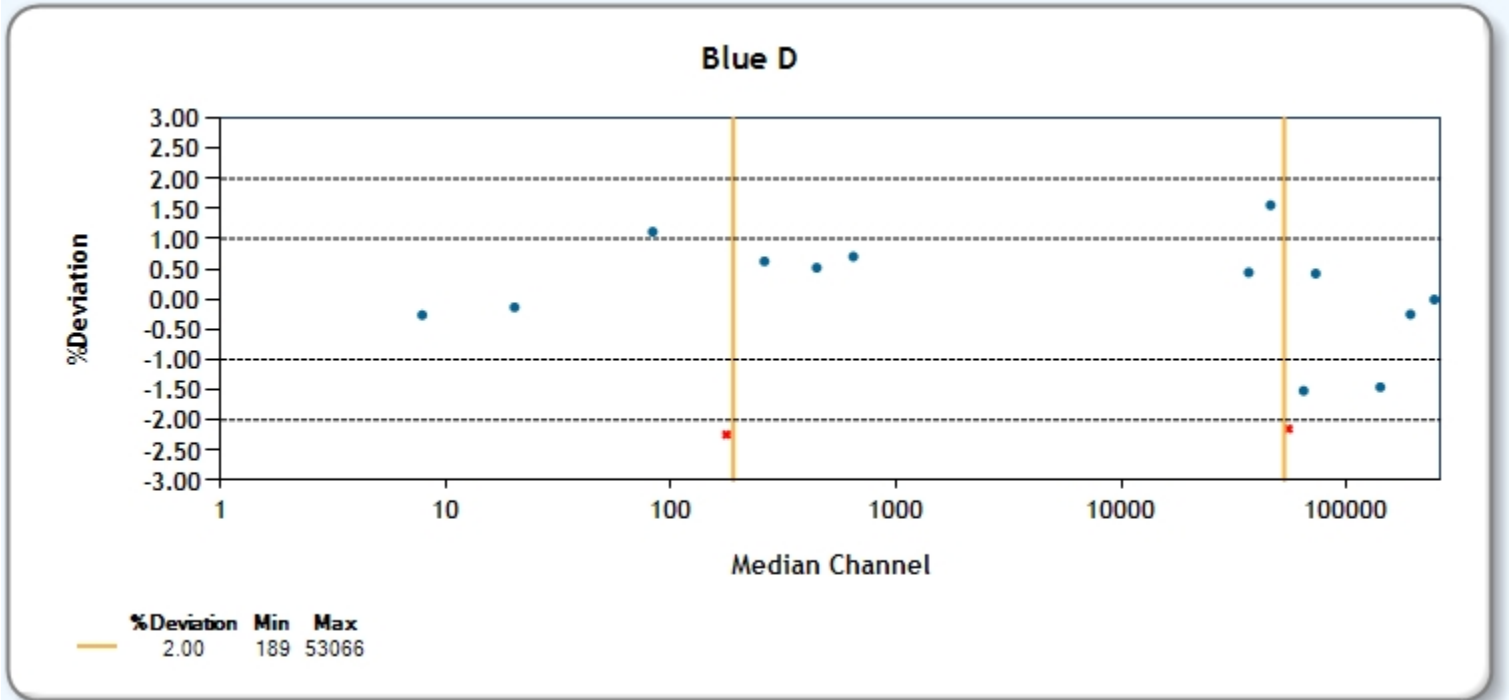


# Cytometer Baseline Report

Cytometer: LSRII  
Cytometer Name: LSRII-B Bullwinkle  
Serial Number: H47800061  
Input Device: HTS  
Tube Loaded Manually: Yes  
Cytometer Configuration: 03202015-H4780061 4-B 6V-6UV 2-R (LEGO)

User: Administrator  
Institution: BD Biosciences  
Software: BD FACSDiva 8.0.1  
Date: 06/12/2015 12:59 PM

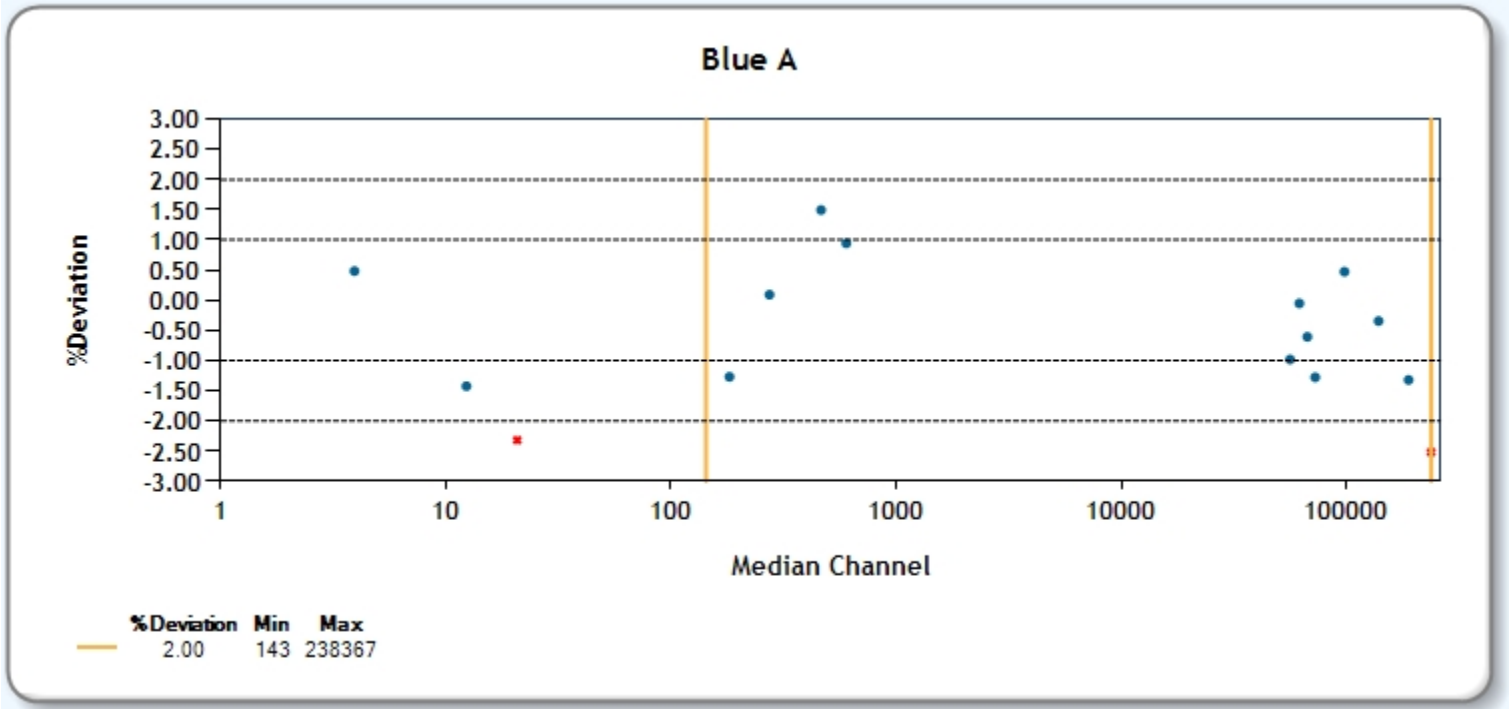
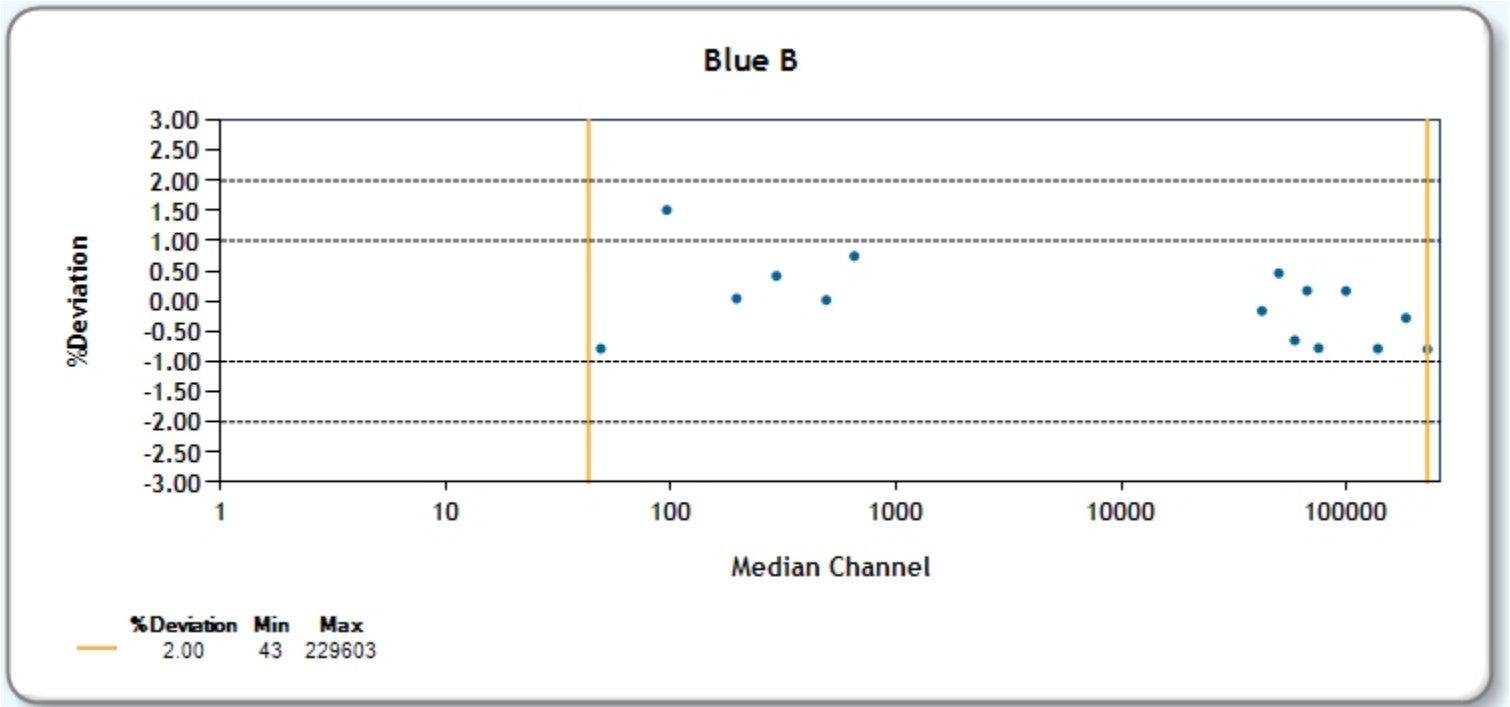
## Linearity Results



# Cytometer Baseline Report

Cytometer: LSRII  
Cytometer Name: LSRII-B Bullwinkle  
Serial Number: H47800061  
Input Device: HTS  
Tube Loaded Manually: Yes  
Cytometer Configuration: 03202015-H4780061 4-B 6V-6UV 2-R (LEGO)

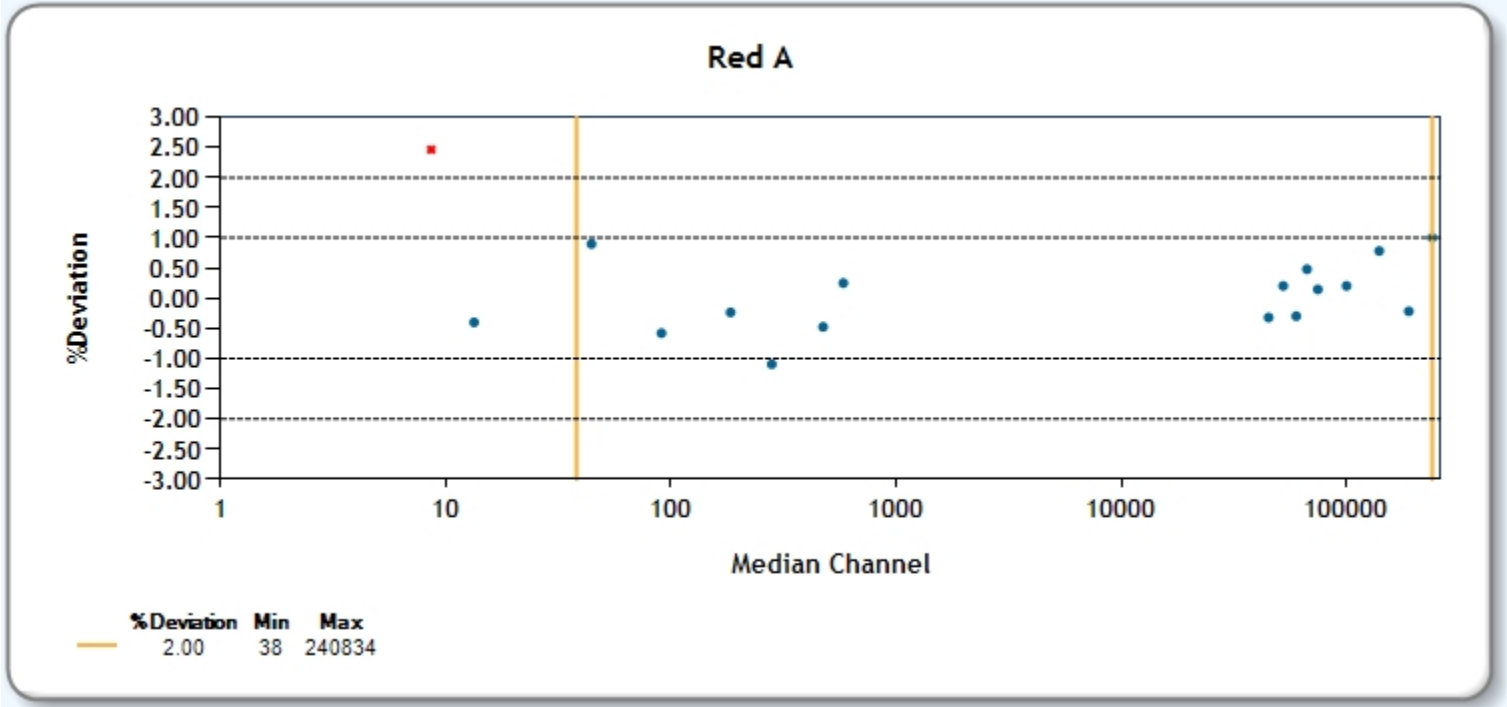
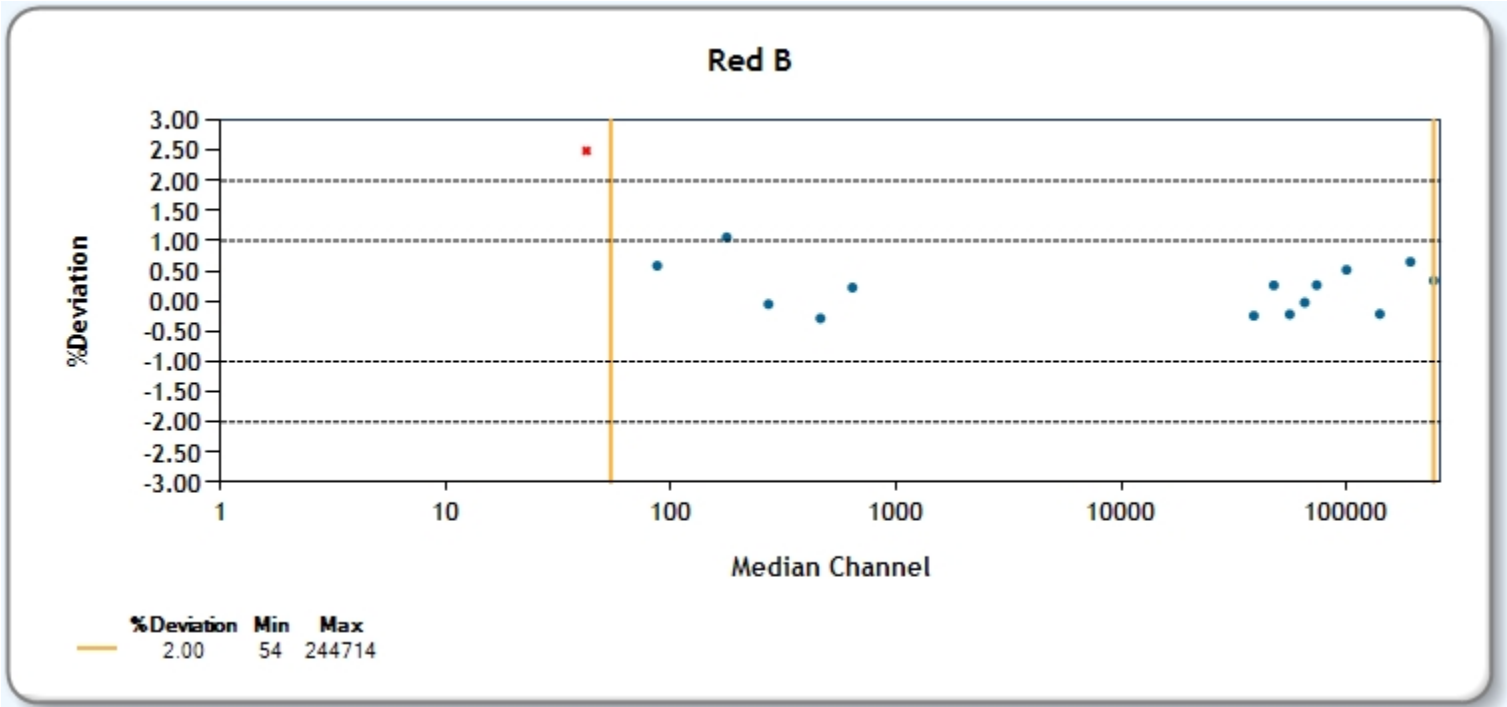
User: Administrator  
Institution: BD Biosciences  
Software: BD FACSDiva 8.0.1  
Date: 06/12/2015 12:59 PM



# Cytometer Baseline Report

Cytometer: LSRII  
Cytometer Name: LSRII-B Bullwinkle  
Serial Number: H47800061  
Input Device: HTS  
Tube Loaded Manually: Yes  
Cytometer Configuration: 03202015-H4780061 4-B 6V-6UV 2-R (LEGO)

User: Administrator  
Institution: BD Biosciences  
Software: BD FACSDiva 8.0.1  
Date: 06/12/2015 12:59 PM

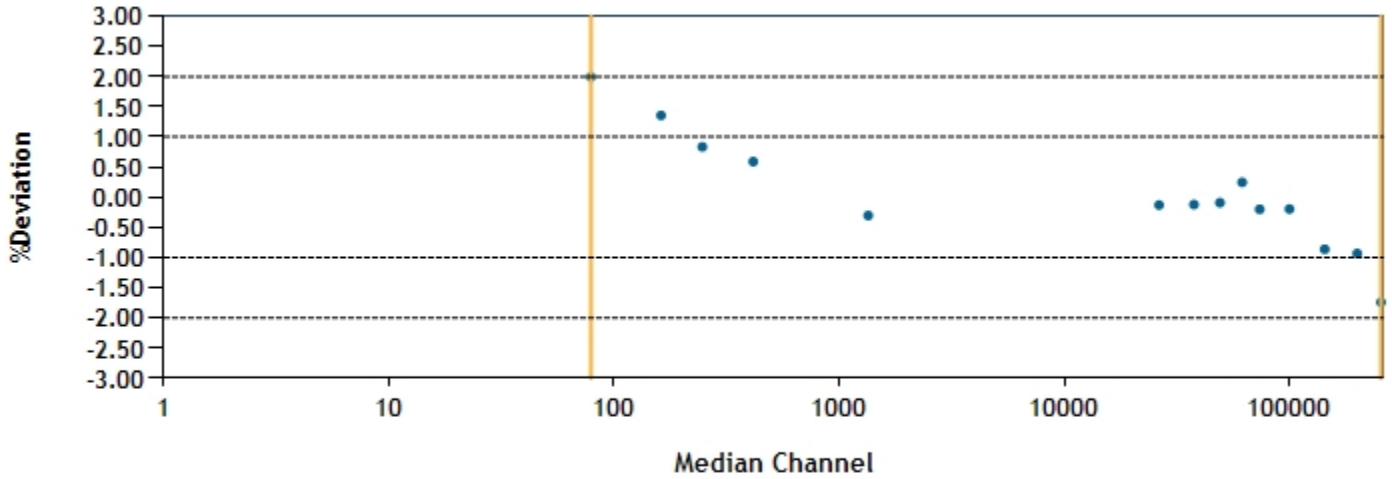


# Cytometer Baseline Report

Cytometer: LSRII  
Cytometer Name: LSRII-B Bullwinkle  
Serial Number: H47800061  
Input Device: HTS  
Tube Loaded Manually: Yes  
Cytometer Configuration: 03202015-H4780061 4-B 6V-6UV 2-R (LEGO)

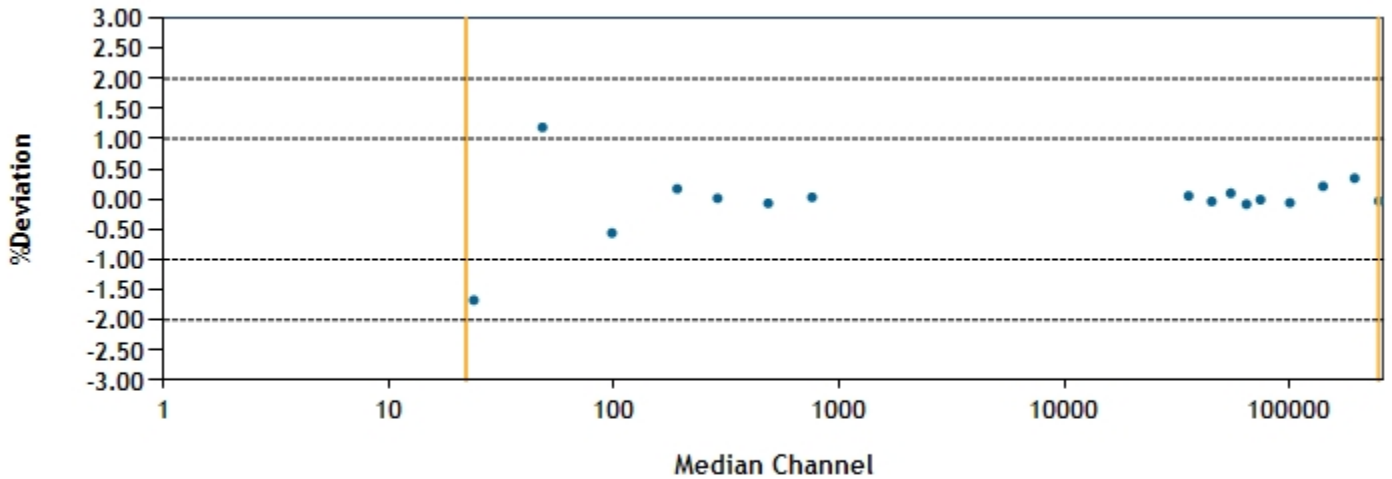
User: Administrator  
Institution: BD Biosciences  
Software: BD FACSDiva 8.0.1  
Date: 06/12/2015 12:59 PM

## Violet F



**%Deviation Min Max**  
2.00 79 255418

## Violet E



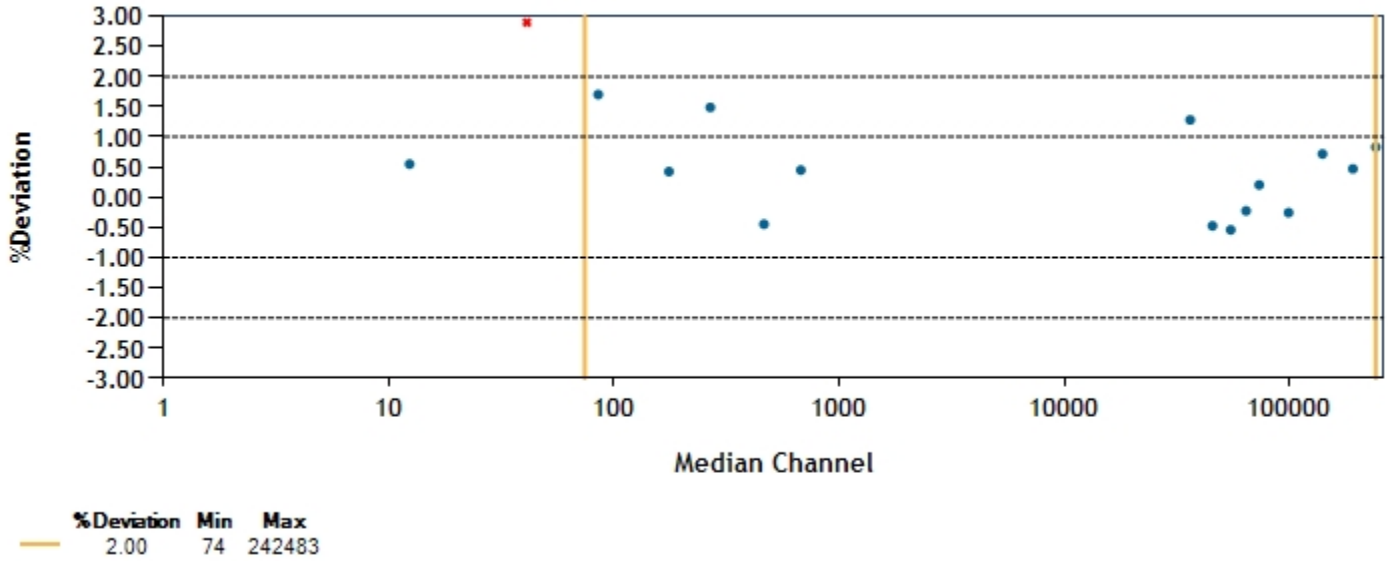
**%Deviation Min Max**  
2.00 22 249616

# Cytometer Baseline Report

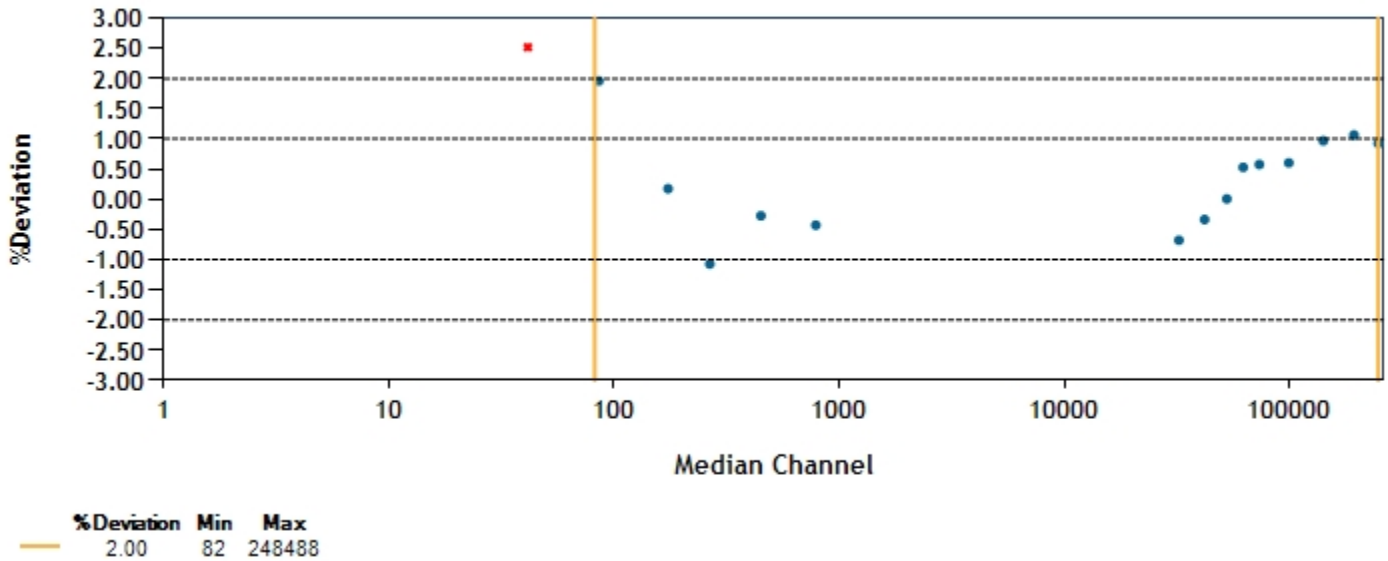
Cytometer: LSRII  
Cytometer Name: LSRII-B Bullwinkle  
Serial Number: H47800061  
Input Device: HTS  
Tube Loaded Manually: Yes  
Cytometer Configuration: 03202015-H4780061 4-B 6V-6UV 2-R (LEGO)

User: Administrator  
Institution: BD Biosciences  
Software: BD FACSDiva 8.0.1  
Date: 06/12/2015 12:59 PM

## Violet D



## Violet C



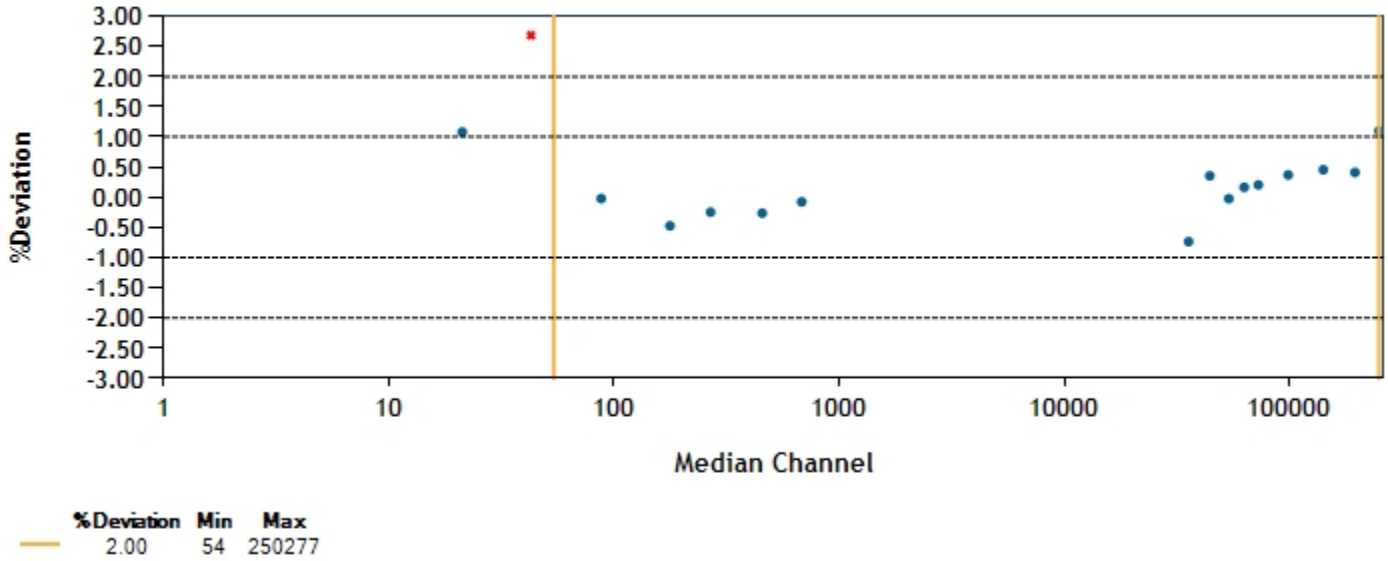


# Cytometer Baseline Report

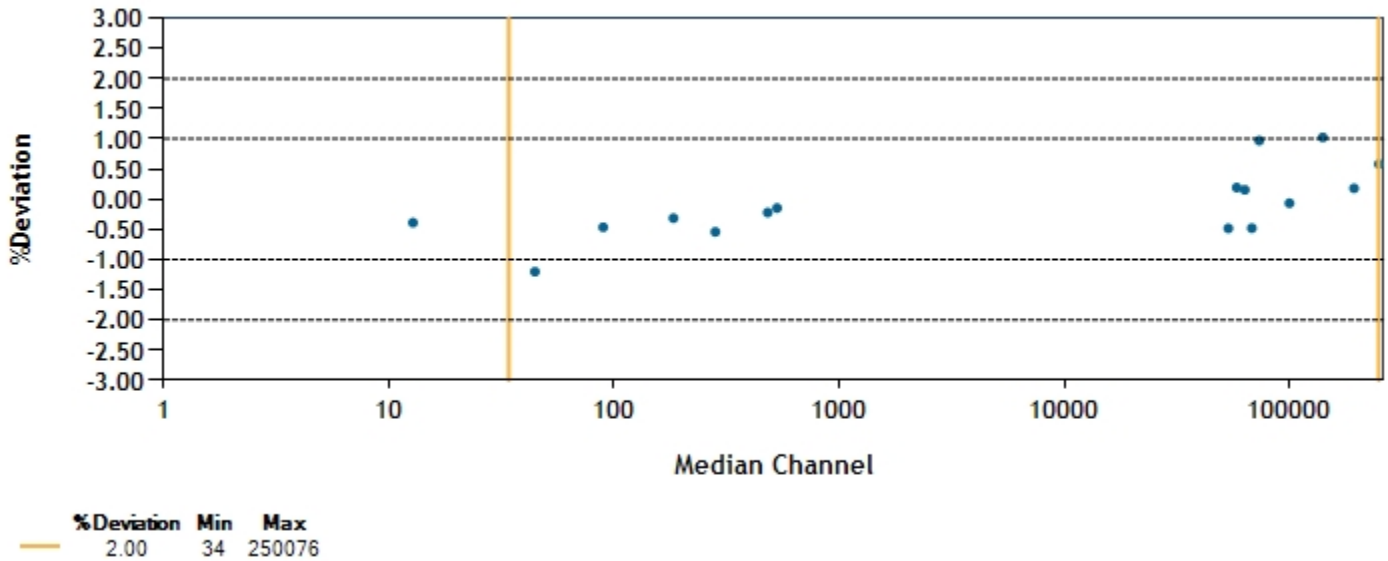
Cytometer: LSRII  
Cytometer Name: LSRII-B Bullwinkle  
Serial Number: H47800061  
Input Device: HTS  
Tube Loaded Manually: Yes  
Cytometer Configuration: 03202015-H4780061 4-B 6V-6UV 2-R (LEGO)

User: Administrator  
Institution: BD Biosciences  
Software: BD FACSDiva 8.0.1  
Date: 06/12/2015 12:59 PM

## Violet B



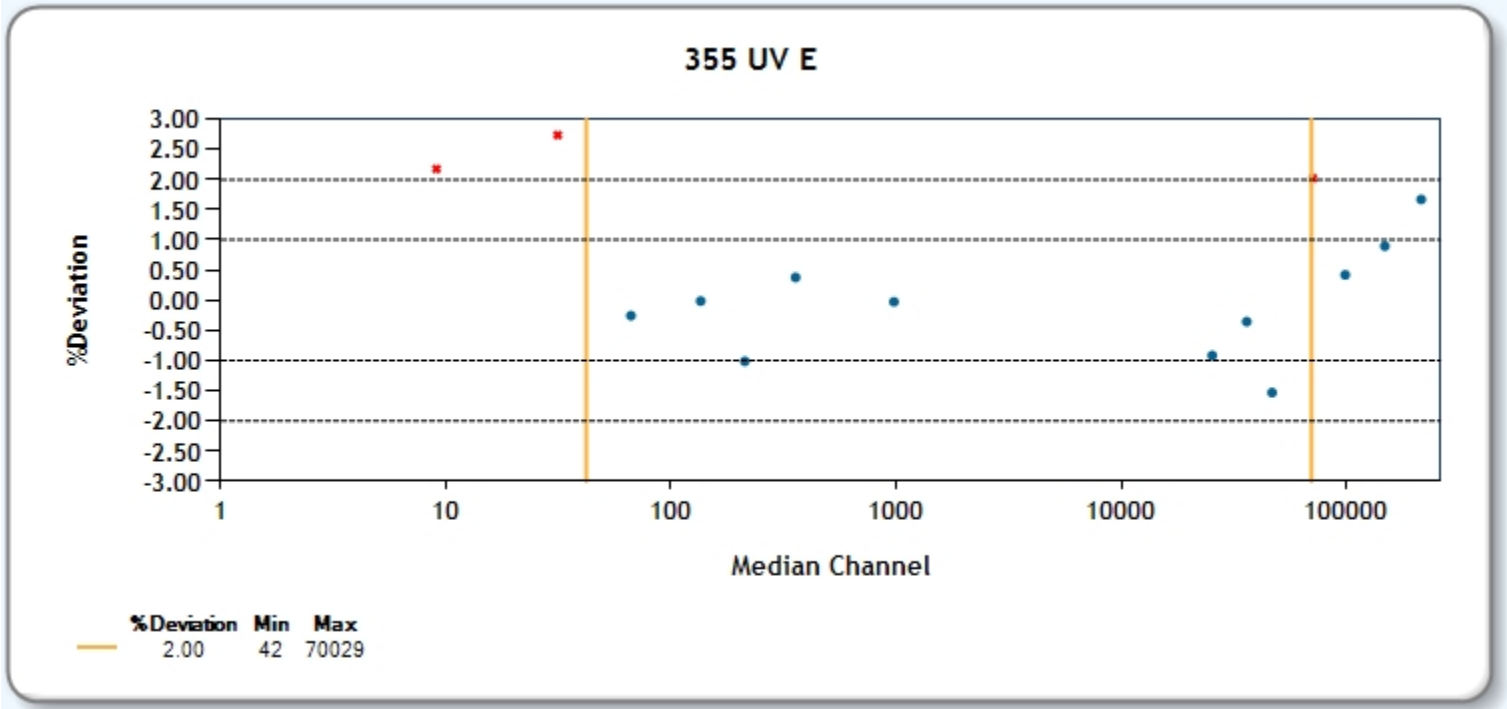
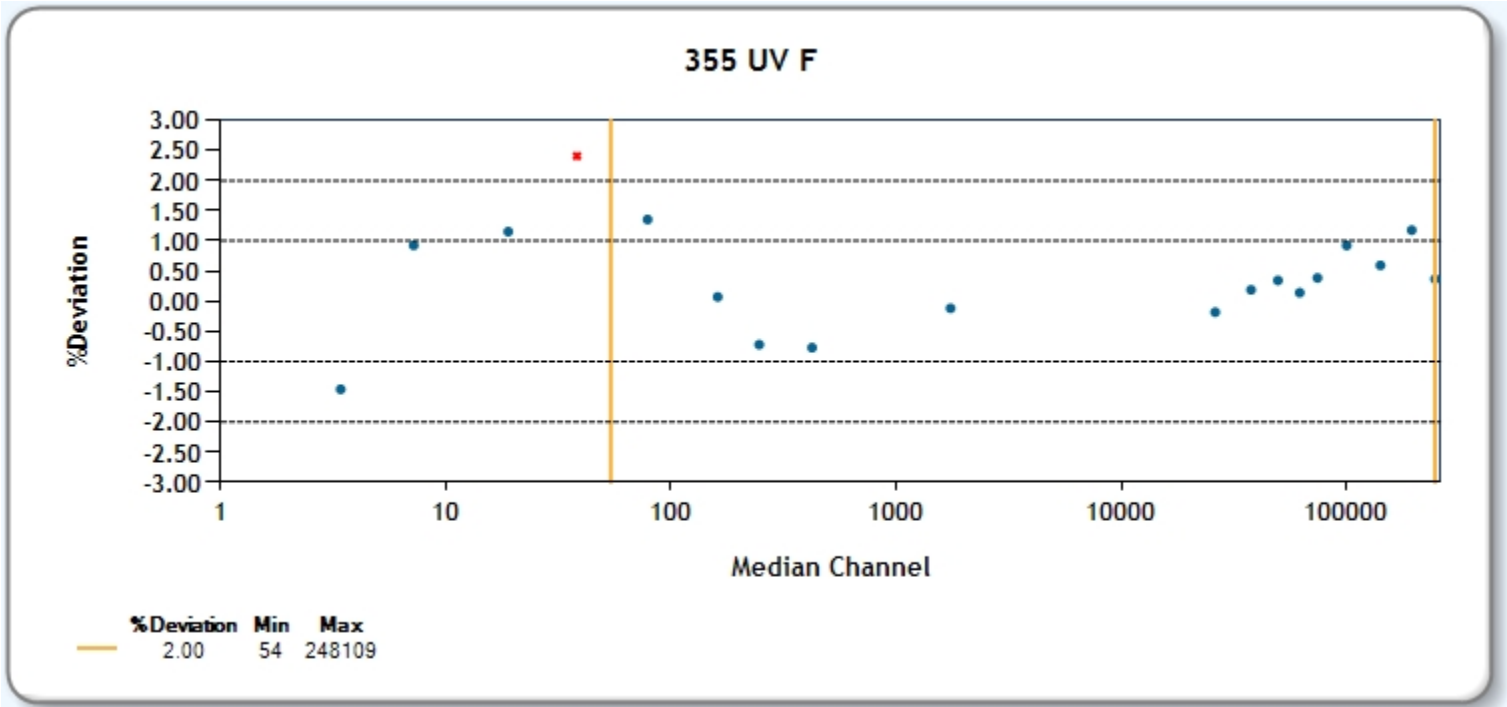
## Violet A



# Cytometer Baseline Report

Cytometer: LSRII  
Cytometer Name: LSRII-B Bullwinkle  
Serial Number: H47800061  
Input Device: HTS  
Tube Loaded Manually: Yes  
Cytometer Configuration: 03202015-H4780061 4-B 6V-6UV 2-R (LEGO)

User: Administrator  
Institution: BD Biosciences  
Software: BD FACSDiva 8.0.1  
Date: 06/12/2015 12:59 PM

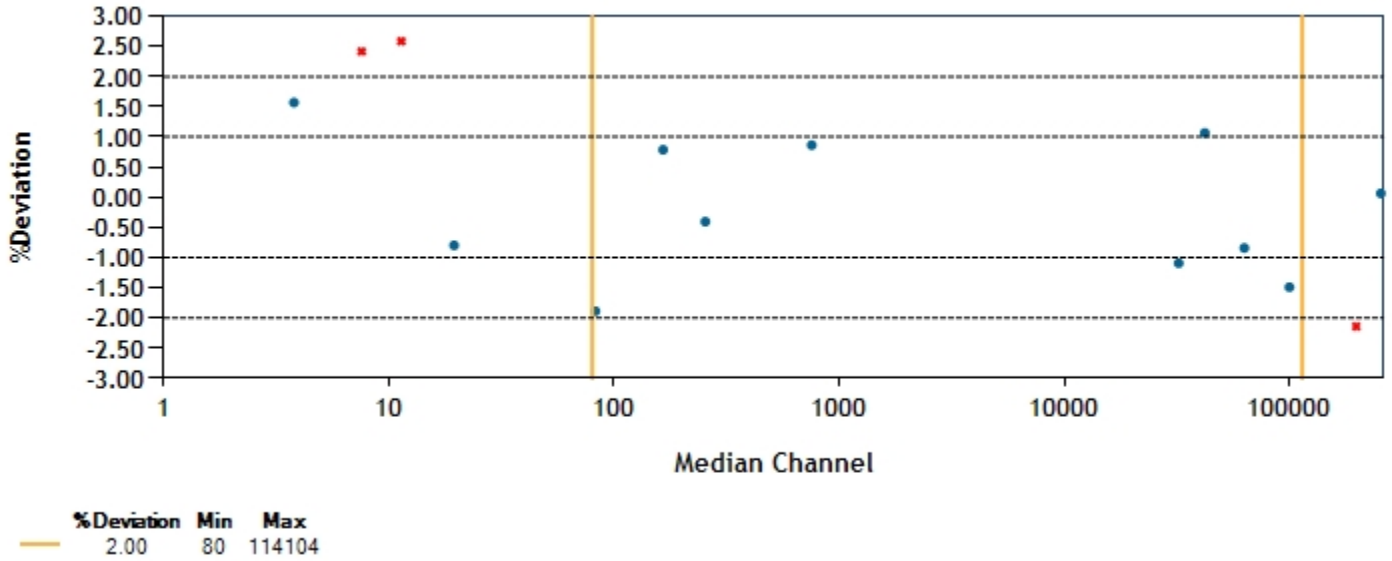


# Cytometer Baseline Report

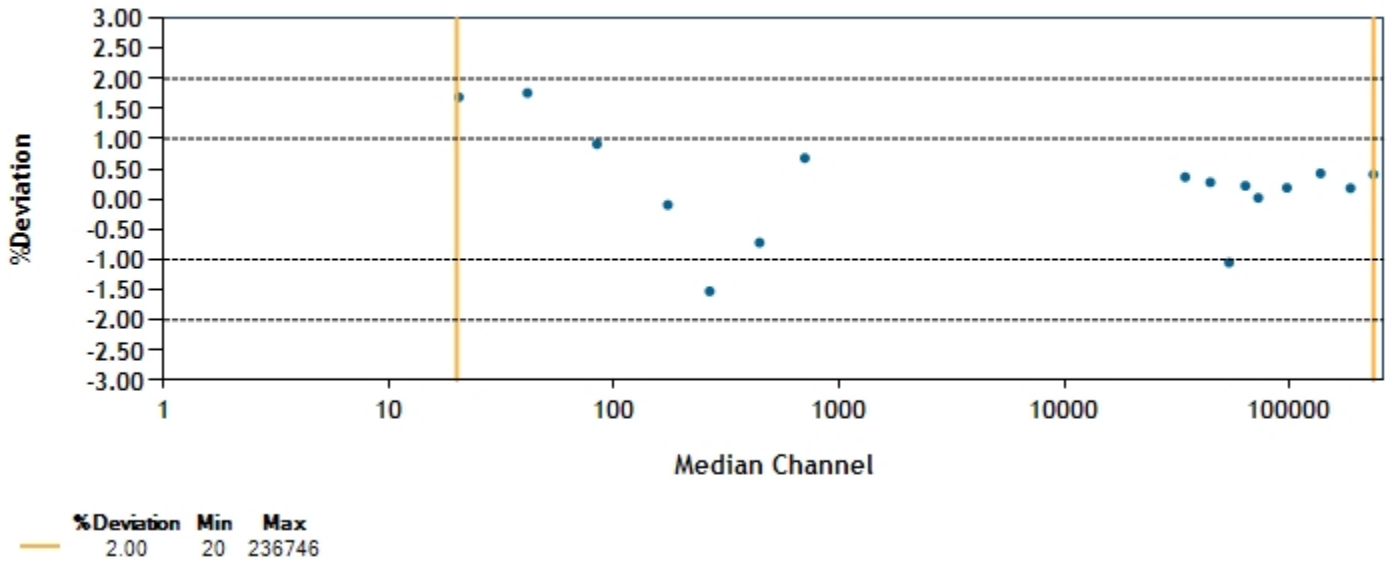
Cytometer: LSRII  
Cytometer Name: LSRII-B Bullwinkle  
Serial Number: H47800061  
Input Device: HTS  
Tube Loaded Manually: Yes  
Cytometer Configuration: 03202015-H4780061 4-B 6V-6UV 2-R (LEGO)

User: Administrator  
Institution: BD Biosciences  
Software: BD FACSDiva 8.0.1  
Date: 06/12/2015 12:59 PM

## 355 UV D



## 355 UV C

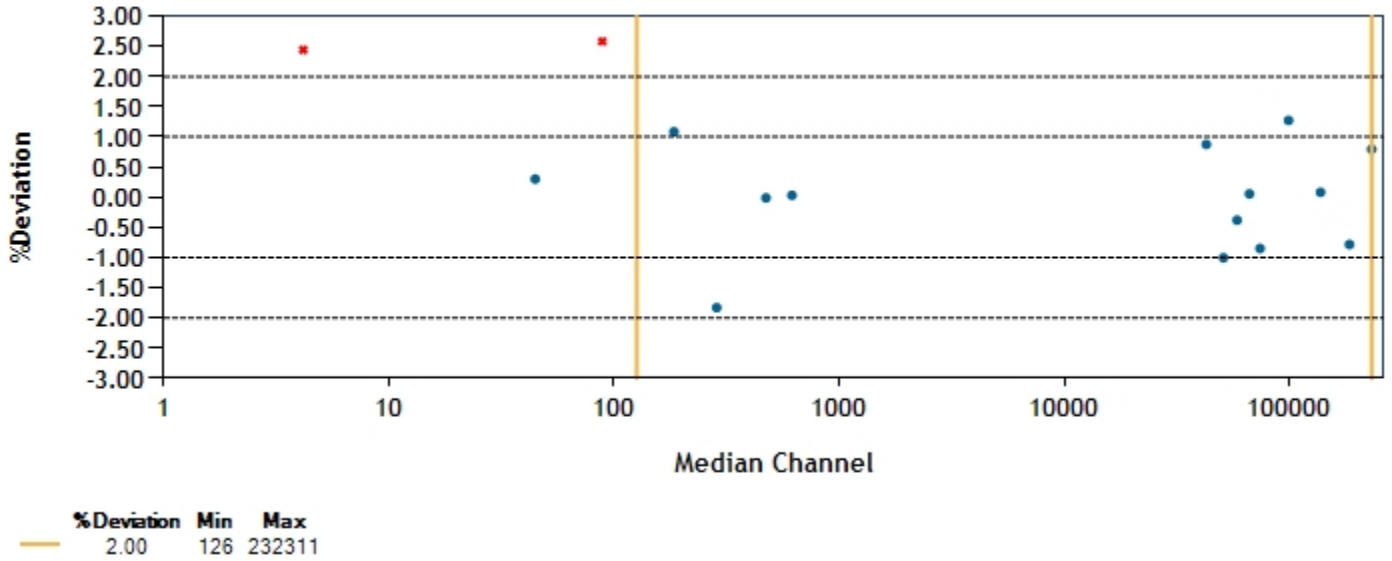


# Cytometer Baseline Report

Cytometer: LSRII  
Cytometer Name: LSRII-B Bullwinkle  
Serial Number: H47800061  
Input Device: HTS  
Tube Loaded Manually: Yes  
Cytometer Configuration: 03202015-H4780061 4-B 6V-6UV 2-R (LEGO)

User: Administrator  
Institution: BD Biosciences  
Software: BD FACSDiva 8.0.1  
Date: 06/12/2015 12:59 PM

### 355 UV B



### 355 UV A

